



Engaging learning environments



**Flexible freight
options available**

Prices exclude taxes & duties

teaching.com.au

P +61 2 9907 5260 E export@teaching.com.au

Contents

Aurum Spaces™ Furniture	9
Beds & Peg Mats	41
Carpets & Cushions	48
Cots & Sleeptime	38
Educator Furniture	65
Ergerite™ Furniture	30
Harmony Education™ Furniture	28
Lounges & Ottomans	44
Milan Education™ Furniture	25
Natural Spaces™ Furniture	1
Norwegia Spaces™	14
Outdoor Furniture	57
Outdoor Mats	60
Room Dividers & Trolleys	61
SafeSpace™ Toddler Furniture	33
Stockholm Spaces™ Furniture	18
Storage Solutions	62
Thrifty™ Furniture	24



Natural Spaces™ Furniture

Natural Spaces features a birch ply and melamine finish. This complete offering of furniture equipment is designed to create a stimulating learning environment. All the furniture is designed to be modular to allow all the Natural Spaces range to fit neatly with one another. All Natural Spaces furniture features a low maintenance wipe-clean surface. Most tables suitable from early childhood and early primary schools.

Natural Spaces Chairs

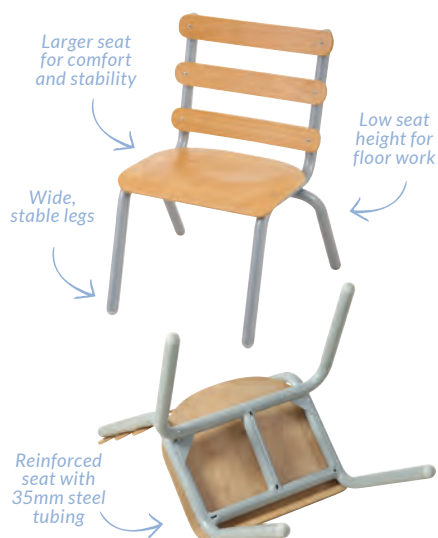
These sturdy chairs feature a curved birch ply seat and back and sturdy metal legs and frame. The legs each have plastic feet to help reduce noise and minimise floor scratches. Chairs are stackable. Available in various heights.



45m*	40cm*	35cm*	31cm*	26cm*
DM4545 \$89.95	DM4540 \$84.95	DM4535 \$74.95	DM4531 \$69.95	DM4526 \$64.95

Child height	85-105cm	100-125cm	120-130cm	125-150cm	145-165cm	160cm +
Suitable chair seat height	25cm	30cm	35cm	40cm	45cm	45cm
Suitable table height	45cm	50cm	55cm	63cm	65cm	65cm

Ergonomically tested & designed for adults



Weight tested up to 170kg

Natural Spaces – Heavy Duty Low Adult Chair

Because educators often teach at floor level, OHS ergonomic assessments have identified the need for a low chair which is designed for adult use. This chair is the result of tests that use the innovative ViSafe movement sensing technology. These tests have resulted in a chair which is specifically designed to provide adult educators a comfortable and stable seat while working at low levels.

DM4564 35cm \$114.95



Natural Spaces Toddler Stackable Chair

These stackable toddler chairs are available in 2 heights. ACH8008 seat height measures 20cm and ACH8010 measures 25cm high.

ACH8008	20cm	\$69.95
ACH8010	25cm	\$79.95



Natural Spaces™ Tables

Natural Spaces tables are manufactured with an easy to clean melamine finish. The tables are adjustable from 38cm to 62cm high. Tables are suitable for use from early childhood and early primary school. Assembly is required.



Suitable
up to high
school

Natural Spaces
tables have height
adjustable legs &
are suitable for early
years & primary
schools

Natural Spaces – High Rectangular Table

A versatile table that can be used from early childhood through to high school. Table legs can be adjusted from 57(H)cm up to 79.5(H)cm. Allows younger children to stand up while working as well as a normal desk for older children.

DM4013 120 x 60cm \$319.95



Natural Spaces – Square Table

DM4012 75 x 75cm \$279.95



Natural Spaces – Group Table

DM4009 180 x 90cm \$449.95



Natural Spaces – Trapezoidal Table

Illustrated chairs not included.

DM4007 120 x 60cm \$279.95



Natural Spaces – Rectangular Table

DM4001 120 x 60cm \$259.95
DM4011 120 x 75cm \$319.95



Natural Spaces – Round Table

DM4006 120cm diameter \$439.95



76cm (W)
60cm (D)
80cm (H)

Natural Spaces – Book Display and Storage Unit

Features 5 wide storage sections, and a shelf on opposite side. Measures 76(W) x 60(D) x 80(H)cm. Assembly required.

DM2018M

\$469.95



80cm (W)
39cm (D)
80cm (H)

Natural Spaces – Big Book Teacher Station

Features a magnetic whiteboard, a wooden panel with clips, 2 shelves and lockable castors. Measures 80(W) x 39(D) x 80(H)cm. Assembly required.

DM2003M

\$419.95



Back panel
has a mirror

Natural Spaces – Junior Book Display and Mirror

Features 7 sections in various sizes, and a large back mirror panel. Measures 83(W) x 53(D) x 38.2(H)cm. Assembly required.

DM2025M

\$369.95

Natural Spaces – Two-Sided Book Stand

80cm (W)
39cm (D)
76cm (H)

Features lockable castors, and each side includes 4 sections, which can hold both small and big books. Measures 80(W) x 39(D) x 76(H)cm. Assembly required.

DM2017M

\$319.95



Castor Upgrade Kit

Can hold up to 140kg. Can be used on most items up to 80(H)cm.

DM4022

Set of 4 \$29.95



Large Heavy Duty Castors

Can hold up to 320kg. Can be used on most items up to 80(H)cm.

DM023

Set of 4 \$79.95

Natural Spaces – Open Back Cabinets Kit

Expanding the Natural Spaces range we offer the open back range of furniture. All units are 40cm deep and 57(H)cm. This furniture can be used to divide a room and still allow visibility through the open back to ensure child safety. Kit contains: 1 x Open Back Curved Storage Unit (DM12010M), 1 x Open Back Two Level Cabinet (DM12011M) and 1 x Corner Unit (DM12012M). Contents may vary.

DM12010KM \$919.95



Natural Spaces – Corner Unit

Measures 40(W) x 40(D) x 57(H)cm. Assembly required.

DM12012M \$219.95

40cm (W)
40cm (D)
57cm (H)



Natural Spaces – Open Back Curved Storage Unit

Measures 113(W) x 39(D) x 57(H)cm. Assembly required.

DM12010M \$399.95

113cm (W)
39cm (D)
57cm (H)



Natural Spaces – Open Back Two Level Cabinet

Measures 120(W) x 40(D) x 57(H)cm. Assembly required. Suitable for use with castors.

DM12011M \$349.95

120cm (W)
40cm (D)
57cm (H)



Natural Spaces – Double Shelf

Measures 82(W) x 40(D) x 57(H)cm. Assembly required. Suitable for use with castors.

DM2034M \$279.95

82cm (W)
40cm (D)
57cm (H)



Natural Spaces – Open Back 2 Shelf Unit

Measures 90(W) x 40(D) x 57(H)cm. Assembly required. Suitable for use with castors.

DM12331M \$269.95

90cm (W)
40cm (D)
57cm (H)



Natural Spaces – STEM & Loose Parts Construction Storage

Excellent for storing manipulatives and loose parts. Measures 120(W) x 38(D) x 80(H)cm.

DM11906

NEW
120cm (W)
38cm (D)
80cm (H)

\$499.95



Natural Spaces – Tall Locker Storage

Features large storage shelves and castors. Includes acoustic panelling on the back which can be used as a pinboard. Measures 45(W) x 45(D) x 112(H)cm.

DM11901

NEW
45cm (W)
45cm (D)
112cm (H)

\$259.95

Compartment Cabinet

Includes a 10 Compartment Cabinet 4 Shelf Unit (DM2076M) and a 10 Compartment 4 Shelf Curved Cabinet (DM2079M).

DM2076MK

Set of 2 \$1,129.95

~~\$1,179.90~~
\$1,129.95
—
Save \$49.95



10 Compartment Cabinet 4 Shelf Unit

Measures 120(W) x 39(D) x 103(H)cm. Assembly required.

DM2076M

120cm (W)
39cm (D)
103cm (H)

\$529.95

10 Compartment 4 Shelf Curved Cabinet

Measures 120(W) x 51(D) x 103(H)cm. Assembly required.

DM2079M

120cm (W)
51cm (D)
103cm (H)

\$649.95

~~\$1,309.85~~
\$1,199⁹⁵

Save \$109.90



Natural Spaces – Open Back Triple Cabinet Kit

Kit includes 1 x Open Back Triple Curved Shelf (DM12097), 1 x Open Back Triple Shelf (DM12098) and 1 x Triple Corner Shelf (DM12099). Measures 80(H)cm. Contents may vary.

DM12099K

\$1,199.95



39cm (D)
80cm (H)

Natural Spaces – Triple Corner Shelf

Measures 39(D) x 80(H)cm.

DM12099

\$239.95



120cm (W)
39cm (D)
80cm (H)

Natural Spaces – Open Back Triple Shelf

Measures 120(W) x 39(D) x 80(H)cm.

DM12098

\$469.95



113cm (W)
39cm (D)
80cm (H)

Natural Spaces – Open Back Triple Curved Shelf

Measures 113(W) x 39(D) x 80(H)cm.

DM12097

\$599.95



119.5cm (W)
36.5cm (D)
59.5cm (H)

Natural Spaces – Room Divider

Measures 119.5(W) x 36.5(D) x 59.5(H)cm. Supplied with castors. Assembly required.

DM2206

\$239.95



120cm (W)
40cm (D)
40cm (H)

Natural Spaces – Mirrored Small Room Divider

Features a mirrored front panel. Includes lockable castors for easy mobility (not illustrated). Measures 120(W) x 40(D) x 40(H)cm without castors. Assembly required.

TF092

\$309.05

Natural Spaces™ Furniture



DM11016K

69cm (W)
45cm (D)
66cm (H)

DM11017K

102cm (W)
45cm (D)
66cm (H)

Natural Spaces – Storage & Trays

These flexible storage units are available with and without plastic containers. Double measures 69(W) x 45(D) x 66(H) cm and Triple measures 102(W) x 45(D) x 66(H)cm. All units includes castors. The kits include wooden shelving plus plastic storage containers (SUN831L and SUN832S). Also compatible with Grannells containers. Contents may vary.

DM11017K

Triple Width Storage & Trays \$599.95

DM11016K

Double Width Storage & Trays \$379.95

Triple Width
Storage & Trays**\$599⁹⁵**

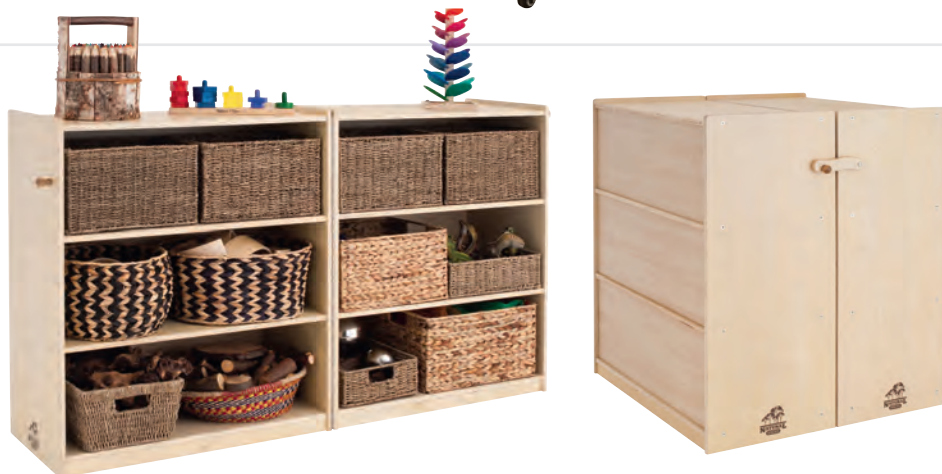
Save \$33.25

80cm (W)
39cm (D)
80cm (H)Natural Spaces
– Fold and Lock Cabinet

This foldable storage unit can be locked when closed. Each side measures 80(W) x 39(D) x 80(H)cm and features 3 wide shelves. Includes small castors (not illustrated). Assembly required.

DM2032M

\$659.95



DM2081M

55cm (W)
39cm (D)
77.5cm (H)

DM2080M

82cm (W)
39cm (D)
77.5cm (H)

Natural Spaces – Bag Lockers

These lockers can be placed side by side or used individually. The 4 Bag Locker (DM2081M) measures 55(W) x 39(D) x 77.5(H)cm. The 6 Bag Locker (DM2080M) measures 82(W) x 39(D) x 77.5(H)cm. Assembly required. Suitable for use with castors.

DM2081M

4 spaces \$269.95

DM2080M

6 spaces \$399.95

Natural Spaces
– Wooden Storage Cube

Each cube measures 33.4(W) x 33.4(D) x 40(H) cm. Assembly required. Kit includes 6 x Wooden Storage Cubes (DM2095). These cubes can be screwed to each other to create a large storage display unit. Contents may vary.

DM2095-6

Set of 6 \$499.95

DM2095

Each \$89.95

Set of 6
\$499⁹⁵

Save \$39.75

33.4cm (W)
33.4cm (D)
40cm (H)



Trolley & Trays Save
\$3775

Natural Spaces – MakerSpace & STEAM Trolley

Features removable whiteboard and blackboard, hooks and shelving. Kit includes 4 x Shallow (SUN832S) and 1 x Deep Tray (SUN831L). Includes castors and measures 100(W) x 45(D) x 130(H)cm. Contents may vary.

DM12100K
DM12100

Trolley & Trays **\$619.95**
Trolley **\$599.95**

100cm (W)
45cm (D)
130cm (H)



Storage Unit & Trays Save
\$9340

Features a whiteboard on the back

Natural Spaces – Storage Unit with Whiteboard

A large storage unit featuring a whiteboard on the back. For flexible classrooms. Kit includes 8 x Shallow (SUN832S) and 4 x Deep Trays (SUN831L). Includes castors and measures 120(W) x 45(D) x 86(H)cm. Contents may vary.

DM12101K
DM12101

Storage Unit & Trays **\$629.95**
Storage Unit **\$579.95**

120cm (W)
45cm (D)
86cm (H)



Natural Spaces – Large Storage Tub

A large, open storage tub suitable for storing loose parts, blocks, art and craft, STEM resources and toys. Measures 50(W) x 50(D) x 60(H)cm. Features side handles and castors.

DM11905

\$159.95

NEW

50cm (W)
50cm (D)
60cm (H)



Natural Spaces – Low Storage Unit

An open storage trolley featuring clear sides, 3 internal sections and castors. Measure 99(W) x 39(D) x 45(H)cm

DM11902

\$259.95

NEW

99cm (W)
39cm (D)
45cm (H)



Natural Spaces – Blackboard Low Table

The table measures 75(W) x 75(D) x 28(H)cm and the blackboard measures 57(W)cm.

DM1206

\$199.95

75cm (W)
75cm (D)
28cm (H)



Natural Spaces – 8 Compartment 3 Shelf Unit

Measures 120(W) x 39(D) x 80(H)cm. Assembly required.
Suitable for use with castors.

DM2074M

120cm (W)
39cm (D)
80cm (H)

\$449.95



Natural Spaces – Multi-Purpose Cabinet

This cabinet can be used on a table, bench or on the floor. Each section fits A4 paper. Measures 120(W) x 39(D) x 33(H)cm. Assembly required. Suitable for use with castors.

DM12082

120cm (W)
39cm (D)
33cm (H)

\$279.95



Natural Spaces – 3 Shelf Unit

Measures 102(W) x 39(D) x 80(H)cm. Assembly required.
Suitable for use with castors.

DM2033M

102cm (W)
39cm (D)
80cm (H)

\$399.95



Natural Spaces – 4 Shelf Unit

Measures 120(W) x 39(D) x 103(H)cm. Assembly required.

DM2078M

120cm (W)
39cm (D)
103cm (H)

\$449.95



Natural Spaces – Open Back 6 Compartment Cabinet

Measures 80.4(W) x 40(D) x 103.6(H)cm. Can be attached to a wall. Assembly required.

DM2093

80.4cm (W)
40cm (D)
103.6cm (H)

\$309.95



Natural Spaces – Open Back 4 Compartment Cabinet

Measures 80.4(W) x 40(D) x 69.6(H)cm. Assembly required.
Suitable for use with castors.

DM2094

80.4cm (W)
40cm (D)
69.6cm (H)

\$229.95



Aurum Spaces™ Furniture

The Aurum Spaces furniture range provides a colourful option for the classroom.

This range of furniture combines durable and easy to clean melamine with natural timber. This range of furniture is available across the 3 bright colours of green, blue and orange. The range includes height adjustable tables, wooden and metal chairs and functional shelving units. Tables are suitable for early childhood and early primary schools.



Aurum Spaces Wooden Chairs

The Aurum Spaces wooden chairs feature a colourful melamine seat and back rest with a timber frame. The chairs are available with a seat height of 30cm high. These chairs are available in 4 different colours.



Blue

AUR30B

\$89.95



Green

AUR30G

\$89.95



Orange

AUR30R

\$89.95



Natural

AUR30N

\$89.95

Aurum Spaces Metal Chairs

The Aurum Spaces metal chairs feature a durable, melamine seat and back rest, a strong powder coated metal frame and plastic feet. Available in seat heights from 26cm to 45cm. Available in natural only. *Seat height

Features

Stackable; Strong metal frame;
Lightweight; Easy to clean melamine



26cm*

AUR26M

\$64.95

31cm*

AUR31M

\$69.95

35cm*

AUR35M

\$74.95

40cm*

AUR40M

\$84.95

45cm*

AUR45M

\$89.95

Child height	85-105cm	100-125cm	120-130cm	125-150cm	145-165cm	160cm +
Suitable chair seat height	25cm	30cm	35cm	40cm	45cm	45cm
Suitable table height	45cm	50cm	55cm	63cm	65cm	65cm



Aurum Spaces – Cut Away Table Kits

Kit includes 4 x Cut Away Tables. Available in Natural and an assorted colours kit. Contents may vary.

AUR850N-4	Natural \$1,059.95
AUR850M-4	Mixed \$1,059.95

Set of 4
\$1,059⁹⁵

Save **\$59.85**



Aurum Spaces – Square Table

AUR60N Natural – 60 x 60cm \$219.95



Aurum Spaces – Round Table

AUR85N Natural – 85cm diameter \$269.95



Aurum Spaces – Cut Away Table – 85cm

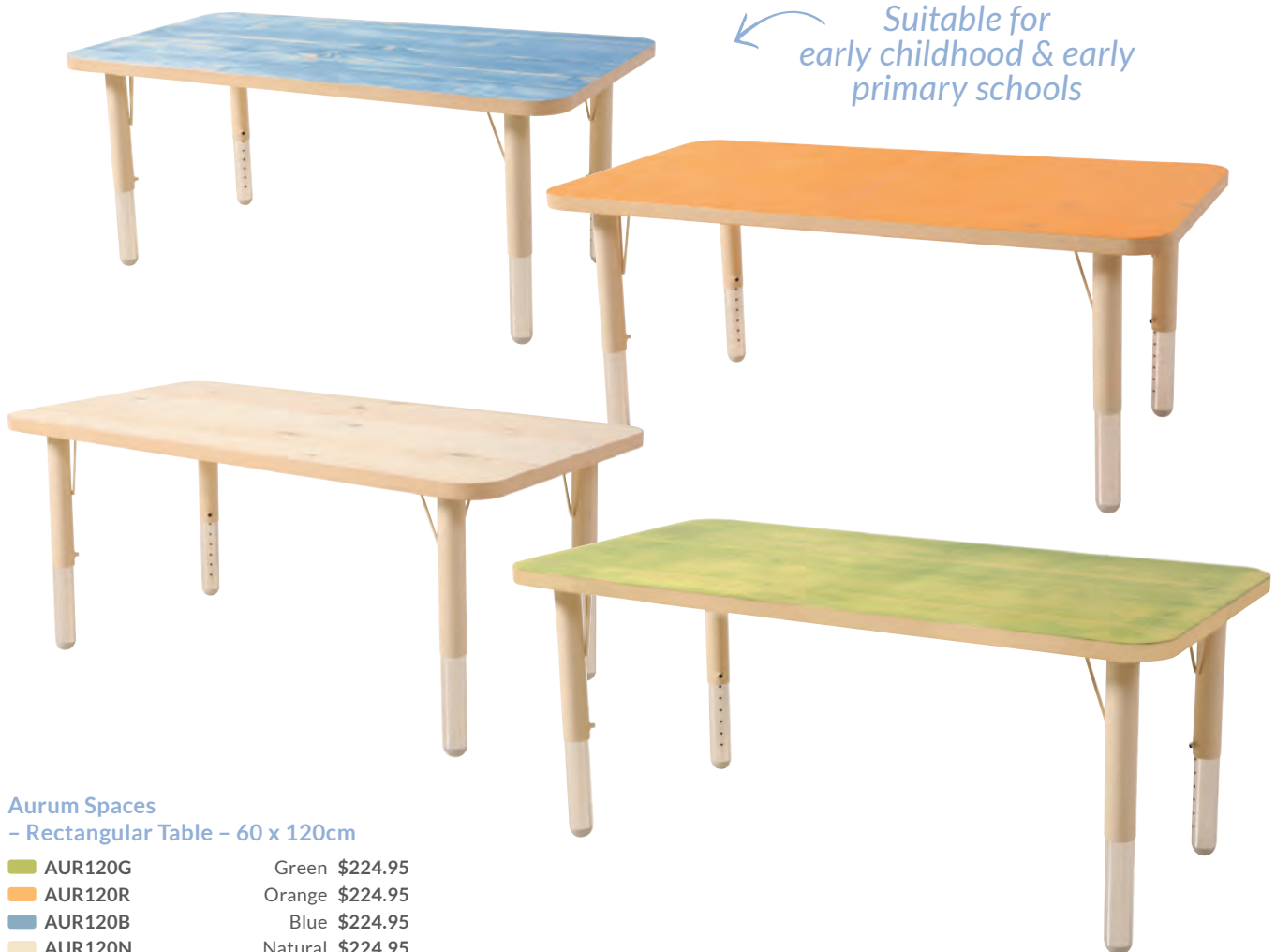
AUR850G	Green \$279.95
AUR850R	Orange \$279.95
AUR850B	Blue \$279.95
AUR850N	Natural \$279.95



Aurum Spaces™ Tables

Aurum Spaces tables are manufactured with an easy to clean melamine finish. The tables are adjustable from 38cm to 62cm high. Tables are suitable for use from early childhood and early primary school.

Assembly is required.



Aurum Spaces – Rectangular Table – 60 x 120cm

	AUR120G	Green	\$224.95
	AUR120R	Orange	\$224.95
	AUR120B	Blue	\$224.95
	AUR120N	Natural	\$224.95

Aurum Spaces – Archway Furniture Kit

Kit includes 1 x Archway (AUR001) and 2 x Open Back Cabinets (DM12011M). Contents may vary.

AUR001K \$1,099.95



~~\$1,209.85~~
\$1,099⁹⁵
 —
 Save \$109.90

AUR002GK



Kit of 3
\$1,099⁹⁵
 Save \$139.90

*Combine Aurum
 Spaces & Natural
 Spaces*

AUR002BK



Aurum Spaces – Open Back Triple Shelf Cabinet Kit

Kit includes 1 x Aurum Spaces Open Back Triple Shelf (AUR002G/B/R), 1 x Natural Spaces Open Back Triple Curved Shelf (DM12097) and 1 x Natural Spaces Triple Corner Shelf (DM12099). Contents may vary.

■ AUR002GK	Green \$1,099.95
■ AUR002BK	Blue \$1,099.95
■ AUR002RK	Orange \$1,099.95



AUR002RK



AUR004GK

Kit of 3
\$899⁹⁵
 Save \$39.90

*Combine Aurum
 Spaces & Natural
 Spaces*

AUR004BK



Aurum Spaces – Open Back Curved Cabinet Kit

Create a dynamic storage space with these open shelving kits. These kits are suitable to be used as room dividers and to help create play spaces. Each kit includes the Aurum Spaces 5 Compartment Cabinet, the Natural Spaces Curved Storage Unit (DM12010M) and the Natural Spaces Corner Unit (DM12012M). All units measure 40(D) x 57(H)cm. Available in 3 colours. Contents may vary.

■ AUR004GK	Green \$899.95
■ AUR004BK	Blue \$899.95
■ AUR004RK	Orange \$899.95



AUR004RK



Aurum Spaces™ Shelving

The Aurum Spaces shelving and storage units are made with a durable, melamine finish. The cabinets feature a natural wood frame, and the internal shelves are available in 3 different colours. The units that measure up to 80cm high can be used with optional castors.

Aurum Spaces – Book Storage Unit

80cm (W)
40cm (D)
80cm (H)

A colourful book storage unit. Features 4 compartments on the front, and a low shelf on the back. Measures 80(W) x 40(D) x 80(H)cm.

Measures 120(W) x 39.5(D) x 80(H)cm. Suitable for use with castors.

	AUR005G	Green	\$299.95
	AUR005R	Orange	\$299.95
	AUR005B	Blue	\$299.95



Aurum Spaces – Open Back 8 Compartment Cabinet

120cm (W)
39.5cm (D)
80cm (H)

Measures 120(W) x 39.5(D) x 80(H)cm. Suitable for use with castors.


	AUR002G	Green	\$399.95
	AUR002R	Orange	\$399.95
	AUR002B	Blue	\$399.95



Aurum Spaces – 3 Shelf Cabinet

120cm (W)
39.5cm (D)
80cm (H)

Measures 120(W) x 39.5(D) x 80(H)cm. Suitable for use with castors.

	AUR007G	Green	\$379.95
	AUR007R	Orange	\$379.95
	AUR007B	Blue	\$379.95



Aurum Spaces – Open Back 5 Compartment Cabinet

120cm (W)
39.5cm (D)
57cm (H)

Measures 120(W) x 39.5(D) x 57(H)cm. Suitable for use with castors.

	AUR004G	Green	\$319.95
	AUR004R	Orange	\$319.95
	AUR004B	Blue	\$319.95



Norwegia Spaces™ Furniture



Norwegia Spaces™ Furniture

A modern and contemporary range of furniture. The Norwegia Spaces furniture can be mixed and matched with the Natural Spaces and Aurum Spaces ranges. It features durable white laminate with solid timber and timber melamine. Some tables connect together with an innovative divider to create flexible learning spaces. This range is suitable for both early childhood and also early primary schools.



Norwegia Spaces Chairs

These Norwegia Spaces chairs feature an easy to clean melamine finish and durable, metal frame, stackable legs. Seat heights are available from 26cm to 46cm high. *Seat height.

Features

Stackable; Strong metal frame; Lightweight; Easy to clean; Modern design



46cm*		40cm*		35cm*		31cm*		26cm*	
NOR1046	\$102.95	NOR1040	\$99.95	NOR1035	\$82.95	NOR1031	\$79.95	NOR1026	\$69.95

Child height	85-105cm	100-125cm	120-130cm	125-150cm	145-165cm	160cm +
Suitable chair seat height	25cm	30cm	35cm	40cm	45cm	45cm
Suitable table height	45cm	50cm	55cm	63cm	65cm	65cm

x4

~~\$1,811.35~~
\$1,699.95
Save **\$111.40**



Norwegia Spaces – Art Centre Table Kit



A great kit for any atelier or play space. Includes Circle Table Kit - 50(H)cm (NOR401-50K), 4 x 31cm chairs (NOR1031) and 4 x Table top Art Easels (AM2062). Contents may vary.

ARTCEN1 **\$1,699.95**





Norwegia Spaces – Circle Table Kit

Kit includes 4 x Curved Tables and 4 x Table Containers. Available in 3 heights.

NOR401-45K	178 x 178 x 45cm	\$1,199.95
NOR401-50K	178 x 178 x 50cm	\$1,239.95
NOR401-55K	178 x 178 x 55cm	\$1,279.95



NOR401-55K
\$1,279⁹⁵
—
Save \$159.65



Norwegia Spaces – Rectangular Table

Table measures 120(W) x 60(D)cm.
Available in 3 heights.

NOR4004-45	120 x 60 x 45cm	\$279.95
NOR4004-50	120 x 60 x 50cm	\$289.95
NOR4004-55	120 x 66 x 55cm	\$299.95



Norwegia Spaces – Round Table

Table measures 110(dia)cm.
Available in 3 heights.

NOR4005-45	110 x 45cm	\$379.95
NOR4005-50	110 x 50cm	\$389.95
NOR4005-55	110 x 55cm	\$399.95





Norwegia Spaces – Locker Storage – 9 Compartment

Measures 120(W) x 39(D) x 120(H)cm.

NOR1002

120 x 39 x 120cm **\$489.95**



Norwegia Spaces – Locker Storage – 6 Compartment

Measures 120(W) x 39(D) x 81(H)cm. Suitable for use with castors.

NOR1001

120 x 39 x 81cm **\$399.95**



Norwegia Spaces – Book Shelf

Measures 80(W) x 39(D) x 77(H)cm.

NOR1005

80 x 39 x 77cm **\$399.95**



Norwegia Spaces – Storage Unit – 6 Compartment

Measures 120(W) x 39(D) x 77(H)cm. Suitable for use with castors.

NOR1004

120 x 39 x 77cm **\$409.95**



NOR1006

Norwegia Spaces – Curved Storage Unit

Measures 120(W) x 39(D) x 53(H)cm.

NOR1006

120 x 39 x 53cm **\$419.95**



NOR1003

Norwegia Spaces – Storage Unit – 4 Compartment

Measures 120(W) x 39(D) x 53(H)cm. Suitable for use with castors.

NOR1003

120 x 39 x 53cm **\$299.95**



NOR1007

Norwegia Spaces – Corner Storage Unit

Measures 39(W) x 39(D) x 53(H)cm.

NOR1007 39 x 39 x 53cm **\$189.95**



~~\$909.85~~
\$849⁹⁵
—
Save \$59.90

Create flexible
spaces

Norwegian Spaces – Curved Cabinet Kit

Kit includes the 4 Compartment Storage Unit (NOR1003), the Curved Unit (NOR1006) and the Corner Unit (NOR1007). Contents may vary.

NOR100K Set of 3 \$849.95

198cm (W)
78cm (D)
53cm (H)

Norwegian Spaces – Flexible Shelving Island

A great stand-alone storage unit. Measures 198(W) x 78(D) x 53(H) cm. Each piece is a separate unit and can be moved in various ways. Kit includes Curved End Shelves (NOR1008) and 2 x Open Storage Units (NOR1003). Contents may vary.

NOR1008K 4 pieces \$1,099.95



~~\$1,299.80~~
\$1,099⁹⁵
—
Save \$199.85

78cm (W)
39cm (D)
53cm (H)

Norwegian Spaces – Curved End Shelf

A flexible storage option for the classroom. Can be used alone or with other furniture. Measures 78(W) x 39(D) x 53(H)cm.

NOR1008 \$349.95



~~\$1,259.85~~
\$1,199⁹⁵
—
Save \$59.90

Norwegian Spaces – Curved Storage Kit

Create a flexible space with this versatile set. Kit includes 3 x Curved Storage Shelves (NOR1006). Each measures 53(H)cm. Contents may vary.

NOR1006K 3 pieces \$1,199.95

Stockholm Spaces™ Furniture

stockholm spaces™ Stockholm Spaces™ Furniture

The Stockholm Spaces range of furniture is perfectly suited to any classroom environment. The Stockholm Spaces range features a variety of different furniture pieces which are beautiful, practical and durable. Made from birch plywood, this range will create a warm atmosphere in the classroom. Suitable from early childhood up to middle primary.



Stockholm Spaces Chairs

*Seat height

45cm*		35cm*		30cm*		25cm*		20cm*	
STK5105	\$134.95	STK5102	\$99.95	STK5104	\$96.95	STK5101	\$76.95	STK5100	\$74.95

Child height	85-105cm	100-125cm	120-130cm	125-150cm	145-165cm	160cm +
Suitable chair seat height	25cm	30cm	35cm	40cm	45cm	45cm
Suitable table height	45cm	50cm	55cm	63cm	65cm	65cm



30cm (W)
29cm (D)
35cm (H)

Can be used at 2 different heights

Stockholm Spaces – Toddler Chair

A versatile chair that can be used at 2 different heights. Simply turn the chair upside down for a seat height of either 15 or 20cm. Features side handles. Measures 30(W) x 29(D) x 35(H)cm. Assembly required.

ACH8617 \$54.95
4 or more Each \$48.95



Stackable



Stockholm Spaces – Stackable Stool

A stackable stool that features a contemporary design. Available in 2 seat heights: 25cm and 30cm.

STK1041 25cm \$52.95
STK1206 30cm \$59.95





Stockholm Spaces – Rectangular Tables – 120 x 60cm

STK126045	45cm high	\$329.95
STK126050	50cm high	\$334.95
STK126055	55cm high	\$339.95



Stockholm Spaces – Rectangular Tables – 120 x 75cm

STK127540	40cm high	\$374.95
STK127545	45cm high	\$379.95
STK127550	50cm high	\$384.95
STK127555	55cm high	\$389.95



Stockholm Spaces – Artwork and Display Table

This beautiful, wooden table is perfect for any room. Featuring a clear acrylic window to showcase resources, mini worlds or displays. Features 2 lockable, large side openings for easy access to the display area. Table measures 80(W) x 80(D) x 28(H)cm.

DM005

\$649.95



Stockholm Spaces – Round Tables – 75cm diameter

STK75R45	45cm high	\$289.95
STK75R50	50cm high	\$299.95



Includes 2
leg heights

Stockholm Spaces – Toddler Table & Chairs

This table can be made at 2 heights (28(H) and 40(H)cm). Kit includes 4 x Toddler Chairs (ACH8617), 1 x Low Table (STK20725) and a set of 40cm legs (STK440-KC). Contents may vary.

STK20725K

\$669.95



\$709.70
\$669.95
—
Save \$39.75

PVC Table Covers

Perfect for use with Stockholm Spaces Rectangular Tables.

ACT222	120 x 60cm	\$22.95
ACT223	120 x 75cm	\$24.95

~~\$819.75~~
\$649.95
 Save \$169.80

*Suitable up to
high school* →

Stockholm Spaces – Round Table and Low Seats

Excellent for creating flexible learning areas. This kit includes 4 x Low Seats and the Stockholm Spaces Low Round Table (STK20825). Table measures 120(dia) x 28(H)cm, and the seats feature adjustable backs and measure 52(W) x 52(D) x 44(H)cm. These kits are suitable from early childhood through to high schools. Contents may vary.

STK20825B	Blue \$649.95
STK20825L	Lime \$649.95
STK20825N	Navy \$649.95



Ergerite – Low Floor Seat

A low seat for flexible learning spaces. Measures 52(W) x 52(D) x 44(H)cm when fully upright and features an adjustable back rest. Suitable from early years through to adults.

LS303B	Blue \$99.95
DM4283	Lime \$99.95
DM4284	Navy \$99.95



Table + 6
cushions
Save
\$299.95

Stockholm Spaces – Low Round Table

A low round table for group play. Measures 120(dia)cm x 28(H)cm. Kit includes Low Table and a set of 6 x 50cm Natural Coloured Cushions (DM2012). Contents may vary. Assembly required.

STK20825-6	Tables & Cushions \$699.95
STK20825	Table only \$419.95



Stockholm Spaces – Low Square Table

This versatile table is only 28(H)cm to enable access to all children. Measures 100(W) x 100(D)cm. Assembly required.

STK20725	100cm square \$399.95
----------	-----------------------





Stockholm Spaces – STEM Storage Furniture Kit

Kit includes the Maker Table & Tray (STK8626K) and the STEM Storage Play Table & Trays (STK8625K). Contents may vary.

STK862K

\$549.95



Stockholm Spaces – Maker Table & Tray

A low table featuring a raised edge. Measures 95(W) x 85(D) x 28(H)cm. Includes a tray (SUN831L). Contents may vary.

STK8626K

\$214.95



Stockholm Spaces – STEM Storage Play Table & Trays

Features storage compartments and a raised edge play panel top. Measures 110(W) x 60(D) x 55(H)cm. Kit includes 6 x trays (SUN831L). Contents may vary.

STK8625K Table & Trays \$399.95

STK8625 Table only \$349.95



110cm (W)
60cm (D)
55cm (H)

\$657.55

\$549.95

Save \$107.60



120cm (W)
40cm (D)
82.4cm (H)

Stockholm Spaces – Double Level Storage Cabinet

Measures 120(W) x 40(D) x 82.4(H)cm. Assembly required.

STK1108

\$549.95



Stockholm Spaces – Upright Book Rack & Storage

Features 4 wide book shelves plus a large, open storage space underneath. Measures 83(W) x 40(D) x 82.4(H)cm. Assembly required. Suitable for use with castors.

STK1025

\$529.95



Excellent for
loose parts

Double Set

\$489.95

Save \$29.95

95cm (W)
95cm (D)
86cm (H)



Stockholm Spaces – Display Stand

A versatile furniture piece which features 3 different levels. Perfect for storing and displaying items in the classroom, the stand includes 4 lockable castors. Assembly required and accessories not included. Measures 95(W) x 95(D) x 86(H)cm.

STK8618

\$279.95



65cm (W)
40cm (D)
103cm (H)

Stockholm Spaces – Ladder Shelving

A multi-level shelving unit. Measures 65(W) x 40(D) x 103(H)cm. Can be attached to a wall. Assembly required. The kit includes 2 x Stockholm Spaces Ladder Shelving units (DM2090). Contents may vary.

DM2090-2

Double Set

\$489.95

DM2090

Each

\$259.95



~~\$673.70~~
\$519⁹⁵

Save \$153.75



Stockholm Spaces – Round Table & Woven Chairs

A great set for creating small play spaces, eating or for role play. Kit includes 4 x Woven Seats (UBF200) and 1 x Stockholm Spaces Round Table - 50(H)cm (STK75R50). Contents may vary.

STK75R50K

\$519.95



80cm (W)
50cm (D)
93cm (H)

Stockholm Spaces – Trolley

A versatile trolley featuring 3 wide shelves and lockable castors for easy mobility. Measures 80(W) x 50(D) x 93(H)cm without castors. Assembly required.

STK1109

\$289.95



~~\$839.90~~
\$699⁹⁵

Save \$139.95



Stockholm Spaces – Round Table & Light Panel

Create a wonderful sensory play space. Kit includes the Colour Changing Light Panel (KD960) and the Stockholm Spaces Low Table (STK20825). Light panel measures 60(dia)cm. Table measures 120(dia) x 28(H)cm. Contents may vary.

STK20825-60

\$699.95



57cm (W)
127cm (H)

Stockholm Spaces – Cheval Mirror

A freestanding mirror featuring a scratch resistant, safety mirror and high visibility legs. Measures 57(W) x 127(H)cm. Assembly required.

STK0138

\$269.95



75cm (W)
75cm (D)
28cm (H)

Stockholm Spaces – Mirrored Exploratory Low Table

A great low table that features a central mirror panel. Excellent for exploratory play. Mirror is scratch resistant, safety mirror.

STK8621

\$239.95





STK1102

120cm (W)
40cm (D)
82.4cm (H)

STK1052

120cm (W)
40cm (D)
116cm (H)

Stockholm Spaces – Equipment Cabinets

Cabinets feature compartments each measuring 37.6(W) x 37.2(D) x 32.4(H)cm. STK1102 measures 120(W) x 40(D) x 82.4(H) cm and STK1052 measures 120(W) x 40(D) x 116(H)cm. STK1102 is suitable for use with castors. Assembly is required.

STK1102

6 compartments \$619.95

STK1052

9 compartments \$879.95



STK1052

STK1102

~~\$799.65~~
\$759⁹⁵

Save \$39.70



120cm (W)
40cm (D)
82.4cm (H)

Stockholm Spaces – Equipment Cabinet with 6 Woven Baskets

Kit includes the 6 Compartment Equipment Cabinet (STK1102) and 6 x woven baskets, which measure 32(W) x 37(D) x 26(H)cm. Contents may vary.

STK1102S

\$759.95

~~\$1,149.50~~
\$1,099⁹⁵

Save \$49.55



120cm (W)
40cm (D)
116cm (H)

Stockholm Spaces – Equipment Cabinet with 9 Woven Baskets

Kit includes the 9 Compartment Equipment Cabinet (STK1052) and 9 x woven baskets, which measure 32(W) x 37(D) x 26(H)cm. Contents may vary.

STK1052S

\$1,099.95



Castor Upgrade Kit

Can hold up to 140kg. Can be used on most items up to 80(H)cm.

DM4022

Set of 4 \$29.95



Large Heavy Duty Castors

Can hold up to 320kg. Can be used on most items up to 80(H)cm.

DM023

Set of 4 \$79.95



Stockholm Spaces – Bag Lockers

Large functional lockers to store bags and resources. Each internal compartment measures 25.4(W) x 37.2(D) x 32.4(H) cm. Measures 83.4(W) x 39(D) x 82.6(H)cm. Assembly required. Suitable for use with castors.

STK9054

6 compartments \$489.95



83.4cm (W)
39cm (D)
82.6cm (H)



Stockholm Spaces – Round Book Shelving



70cm (W)
70cm (D)
55cm (H)

This round storage unit is perfect for books and resources. Includes 8 different sections, and features 4 lockable castors. Books not included. Assembly is required. Measures 70(W) x 70(D) x 55(H)cm.

STK8619


\$229.95

Thrifty™ Furniture

THRIFTY™

Thrifty™ Furniture

The Thrifty range is a versatile option for any classroom. The range includes height adjustable tables. The tables feature durable melamine and are suitable for early childhood and early primary school.



Thrifty Tables

Thrifty tables are manufactured from plywood with an easy to clean melamine finish. The tables are adjustable from 38cm to 62cm high. Tables are suitable for use from early childhood and early primary school. Assembly is required.



Thrifty – Group Table
 DM253C 180cm x 120cm \$449.95

Thrifty – Flower Table
 Seats up to 6 children. Chairs not included.
 DM256C 120(dia)cm \$399.95



*Suitable for
early childhood
& early primary
school*

Thrifty – Rectangular Tables
 Available in 2 sizes.
 DM81260 120 x 60cm \$249.95
 DM81275 120 x 75cm \$279.95

Child height	85-105cm	100-125cm	120-130cm	125-150cm	145-165cm	160cm +
Suitable chair seat height	25cm	30cm	35cm	40cm	45cm	45cm
Suitable table height	45cm	50cm	55cm	63cm	65cm	65cm



Milan Education™ Furniture

The Milan Education range is a quality economical range of furniture. The range is modular and as they are the same width can be placed together in the classroom situation. Made from chipboard covered in sturdy beech melamine. The tables can be used for early childhood and early primary school.



Milan Education Chairs

Reflects British and European Educational Furniture Standard (EN1729) *Seat height

Features

- Slip-resistant feet to avoid floor scratches
- Hard-wearing and durable surface
- Sturdy metal frame



46cm*		38cm*		35cm*		31cm*		26cm*	
DM5105	\$89.95	DM5103	\$84.95	DM5102	\$74.95	DM5104	\$69.95	DM5101	\$64.95

Child height	85-105cm	100-125cm	120-130cm	125-150cm	145-165cm	160cm +
Suitable chair seat height	25cm	30cm	35cm	40cm	45cm	45cm
Suitable table height	45cm	50cm	55cm	63cm	65cm	65cm

Milan Education Tables

These durable tables are height adjustable from 37cm to 62cm. Allowing for use for children from the age of 2 years through to primary school. The table top measures 2.8cm thick.

PVC Table Covers

Perfect for use with Milan Education Rectangular Tables.

ACT222	120 x 60cm	\$22.95
ACT223	120 x 75cm	\$24.95

Suitable for early childhood and early primary school



Milan Education – Group Table

For up to 6 children at the same time.

DM809	180 x 120cm	\$449.95
-------	-------------	----------



Milan Education – Round Table

DM808	90cm diameter	\$329.95
-------	---------------	----------



Milan Education – Square Table

DM805	90 x 90cm	\$299.95
-------	-----------	----------



Milan Education – Rectangular Table

DM806	120 x 60cm	\$269.95
DM807	120 x 75cm	\$309.95

Milan Education – Room Dividers Kit

Excellent as partitions for classrooms and to separate play spaces. These wooden room dividers are available with natural, clear and mirrored panels. Each room divider features lockable castors for easy mobility (not illustrated) and high visibility sides. Each divider measures 126(W) x 40(D) x 75(H)cm without castors. Assembly is required. Kit includes 1 x DM1121, 1 x DM1122 and 1 x DM1123. Contents may vary.

DM1100K

Set of 3 \$949.95



\$999.85
\$949⁹⁵
—
Save \$49.90

Natural

DM1121

\$259.95

Clear

DM1122

\$329.95

Mirror

DM1123

\$409.95



Milan Education – Whiteboard & Blackboard Room Divider

Features both a blackboard and a magnetic whiteboard. Can be used vertically or horizontally. Measures 115(W) x 50(D) x 85(H)cm.

DM11907

\$399.95

120cm (W)
40cm (D)
90cm (H)

DM2065S
\$1,079⁹⁵
—
Save \$50.80

Milan Education – Storage Unit – 24 Small Spaces

Features 24 compartments and measures 120(W) x 40(D) x 90(H)cm. Each compartment can hold container measuring 26(W) x 35(D) x 10.5(H)cm. Plastic containers do not fit A4 paper. Assembly required. Contents may vary.

DM2065S With 24 Woven Baskets \$1,079.95

DM2065K With 24 Containers \$999.95

DM2065 Unit only \$699.95



DM2065S

120cm (W)
40cm (D)
90cm (H)

DM2047S
\$869⁹⁵
—
Save \$45.20

Milan Education – Storage Unit – 16 Spaces

Features 16 compartments and measures 120(W) x 40(D) x 90(H)cm. This storage unit can hold 8 x containers measuring 26(W) x 35(D) x 10.5(H)cm and 8 x containers measuring 26(W) x 35(D) x 21(H)cm. Plastic containers do not fit A4 paper. Assembly required. Contents may vary.

DM2047S With 16 Woven Baskets \$869.95

DM2047K With 16 Containers \$799.95

DM2047 Unit only \$579.95



DM2047K



DM2047S



Milan Education – Block Unit

Features solid timber support rails for extra strength. Includes 2 x wide shelves and measures 180(W) x 40(D) x 90(H)cm. Assembly required.

TF002

180cm (W)
40cm (D)
90cm (H)

\$529.95

Double sided



Milan Education – Double-Sided Book Stand

A functional double-sided cabinet which features book shelves on one side, a magnetic board on the other side and space for containers at the bottom. It measures 90(W) x 45(D) x 100(H) cm and includes castors. Kit includes Double-Sided Book Stand and 3 x Large Containers (DM7001) and 3 x Small Containers (DM7002). Contents may vary.

DM2042K

DM2042

Storage Unit + 6 Containers \$699.95

Storage Unit only \$639.95



90cm (W)
45cm (D)
100cm (H)

\$738.65
\$699.95
Save \$38.70



Milan Education – Two Level Hollow Cabinet

These cabinets feature a modern, open design. Can be used as room dividers as well as for storage. Measures 120(W) x 40(D) x 90(H)cm. Assembly required.

DM430

120cm wide \$299.95

120cm (W)
40cm (D)
90cm (H)



Milan Education – Equipment Shelves

A versatile storage unit that features lockable castors for easy mobility and 2 wide shelves. Measures 90(W) x 40(D) x 60(H)cm. Assembly required. Suitable for use with castors.

TF001

90cm (W)
40cm (D)
60cm (H)

\$339.95



Milan Education – Book Display

A functional and mobile book stand. Features lockable castors, 2 x wide shelves on the back and multiple book shelves on the front. Measures 120(W) x 45.5(D) x 90(H)cm. Assembly required. Illustrated accessories not included.

TF030

120cm (W)
45.5cm (D)
90cm (H)

\$499.95

DM0161

DM0163

80cm (W)
40cm (D)
120cm (H)

120cm (W)
40cm (D)
120cm (H)

Milan Education – Large Bag Locker

These bag lockers feature PVC edging for extra durability. Each locker can be used side by side or individually. Each compartment measures 37.5(W) x 37.2(D) x 36.2(H)cm. DM0161 measures 80(W) x 40(D) x 120(H)cm and DM0163 measures 120(W) x 40(D) x 120(H)cm. Assembly required.

DM0161

6 compartments \$379.95

DM0163

9 compartments \$519.95



Harmony Education™ Furniture



Harmony Education™ Furniture

The Harmony Education range of furniture features a classic and timeless design. Each piece is made from solid beech timber, which creates a warm and homely atmosphere in any environment. The Harmony Education series is a high quality and solid choice for the classroom. Tables are suitable from early childhood up to middle primary.



Harmony Education – Solid Wooden Chairs

*Seat height



Features

Solid beech timber; Durable finish;
High quality; Fully assembled;
Environmentally friendly FSC timber



40cm*		35cm*		30cm*		25cm*	
HM5103	\$149.95	HM5102	\$126.95	HM5104	\$119.95	HM5101	\$104.95

Child height	85-105cm	100-125cm	120-130cm	125-150cm	145-165cm	160cm +
Suitable chair seat height	25cm	30cm	35cm	40cm	45cm	45cm
Suitable table height	45cm	50cm	55cm	63cm	65cm	65cm

Harmony Education – Wall Mirror

A large wall mounted mirror. Features scratch resistant, safety mirror and a metal bracket for attaching to the wall (screws are not included). Measures 54(W) x 114(H)cm.

TF0139 \$299.95



54cm (W)
114cm (H)



Table +
6 cushions
\$749⁹⁵
—
Save \$89.40



Harmony Education – Square Low Wooden Table

Perfect for creating a flexible learning environment for both early childhood and schools. Table measures 100(W) x 100(D) x 28(H)cm. The kit includes 1 x Low Table (HM54225) and set of Botanica Cushions (LIJ001K). Contents may vary.

HM5KIT3
HM54225

Kit **\$749.95**
Table only **\$569.95**

Harmony Education - Rectangular Table - 120 x 60cm

HM126045 45cm high \$499.95

HM126050 50cm high \$509.95

HM126055 55cm high \$519.95



PVC Table Covers

Perfect for use with Harmony Education Rectangular Tables.

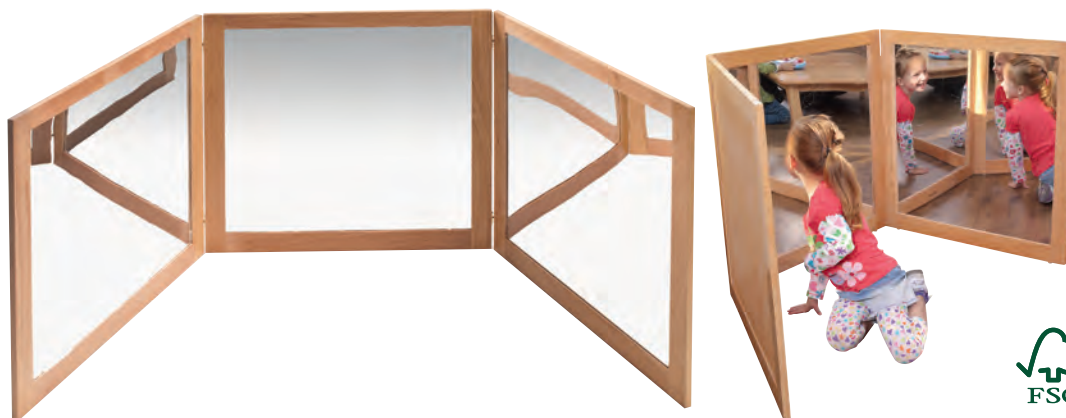
ACT222 120 x 60cm \$22.95



Harmony Education - Three-Panel Mirror

A large, folding mirror for exploratory play. This freestanding mirror features a solid beech timber frame and scratch resistant, safety mirror panels. Each panel measures 75.4cm square.

HM1029 \$699.95



57cm (W)
127cm (H)

Harmony Education - Cheval Mirror

A large, freestanding mirror featuring a scratch resistant, safety mirror panel. Features high visibility legs (different to illustrated). Solid beech timber. Mirror measures 57(W) x 127(H)cm.

TF0138 \$449.95



Harmony Education - Reception Table & Trays

Versatile solid timber table featuring storage compartments and can fit up to 3 Portfolio Storage Units. Measures 104(W) x 40(D) x 93(H)cm. Kit includes 1 x Reception Table (MR40158) and 3 x Storage Baskets (SHT13). Baskets differ to illustrated picture. Contents may vary.

MR4015K

Kit \$399.95

MR40158

Reception Table \$389.95

MR40159

Portfolio Storage \$159.95

Ergerite Chairs

These Ergerite Chairs have a great design allowing children to sit in comfort during their time in class. The chairs are made from polypropylene ensuring the chairs are extremely easy to clean. The chairs come in 6 sizes. *Seat height. **10 or more of any one size and colour.

Benefits

Easy stacking; Easy to clean; Lightweight; Flat seat for comfort; No maintenance; UV stabilised; Hard wearing polypropylene



26cm*

HS003B
HS003G

Each \$24.95
10 or more** \$22.95

30cm*

HS001B HS001GR
HS001R HS001W
HS001Y
HS001J

Each \$26.95
10 or more** \$24.95

33.5cm*

HS004B
HS004G

Each \$32.95
10 or more** \$30.95

40cm*

HS005B
HS005G

Each \$46.95
10 or more** \$44.95

44cm*

HS006B
HS006G

Each \$52.95
10 or more** \$49.95

46cm*

HS007B
HS007G

Each \$59.95
10 or more** \$54.95

Ergerite – Flexi Stool

The stool is excellent for the general classroom as well as children with special needs due to its active movement. Encourages mobility, core strength and supports an active learning environment. Compact and lightweight with a non-slip, rounded base. Measures 33(W) x 33(D). Available in 3 heights.*Seat height. **4 or more of any one size and colour.

31cm*

HS0291W
HS0291B

Each \$59.95
4 or more** \$56.95

37cm*

HS0292B
HS0292R
HS0292G
HS0292S

Each \$64.95
4 or more** \$59.95

45cm*

HS0293B
HS0293R
HS0293G
HS0293S

Each \$69.95
4 or more** \$64.95



Features a curved base for active learning

Ergerite – Square Table

A hard wearing polypropylene table featuring rubber feet. Table measures 62(W) x 62(D) x 52(H)cm and is easy to assemble. Kit includes the blue square table plus one each of the Ergerite 30cm seat height chairs in blue, green, red and yellow. Contents may vary.

HST05K

Table + 4 chairs \$199.95

HST05BL

Blue Square Table only \$99.95



Table + 4 chairs

\$199⁹⁵

Save \$7.80

Ergerite – Brick Construction Table

Play table with storage that features LEGO compatible building plates. Kit includes Table (SUN504), 4 x Large Containers (SUN831L) and 8 x Small Containers (SUN832S). Measures 93(W) x 77(D) x 52(H)cm. Contents may vary.

SUN504K

With Trays \$599.95



\$633.35
\$599⁹⁵

Save \$33.40

ERGERITE™ Ergerite™ Furniture

These versatile tables feature a whiteboard table top. Perfect for collaborative and group work. Available in rectangular and group tables, as well in 2 different adjustable leg heights which are suitable from early childhood through to high school. We recommend to clean with our Teachables Whiteboard Cleaner (TEB0202).



Write on/wipe off whiteboard tables



Ergerite – Whiteboard Rectangular Table

HS060 120 x 60cm – 52-74cm high \$199.95
HS060-1 120 x 60cm – 38-60cm high \$199.95



Ergerite – Whiteboard Group Table

HS077 154cm – 52-74cm high \$299.95
HS077-1 154cm – 38-60cm high \$299.95



Ergerite - Folding Table

A versatile table that can be folded for easy storage. Features a timber-look laminate table top, metal frame and lockable castors. Table top measures 120(W) x 60(D) x 75(H)cm.

HS169 120 x 60 x 75cm \$399.95

NEW



Ergerite – Table Castors

Suitable for our Ergerite height adjustable tables.

HSLEG-CASTOR-4
Set of 4

\$19.95



Table & Trays
Save
\$51⁷⁰

NEW



Ergerite – STEM Table & Trays

Features a whiteboard top, metal frame, lockable castors and storage. Measures 120(W) x 80(D) x 60(H)cm. Kit includes 4 x small (SUN832S) and 2 x large trays (SUN831L). Always lift the trays when inserting or removing. Contents may vary.

HS12460K
HS12460

Table & Trays \$419.95
Table only \$399.95

Ergerite™ Furniture

ERGERITE™ Ergerite™ Tables

These lightweight and robust tables are perfect for the library, primary school or high school classrooms. The table tops are made from a fire retardant particleboard, and are coated with a high quality, grey laminate. The high quality, moulded edge adds extra durability and strength. The legs feature a rubber base to help prevent scratching and can be adjusted to stabilise the table. The tables are available in 2 sizes. Early childhood and early primary school will require the tables adjustable from 38 to 60cm high. Upper primary and high schools will require the tables adjustable from 52 to 74cm high. Castors can be added to our height adjustable tables.



Ergerite – Group Table – 154cm

HS070 52-74cm high \$249.95

HS070-1 38-60cm high \$249.95

Tables
for early
childhood
up to high
school



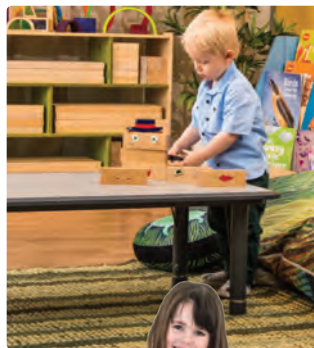
Ergerite – Table Castors

Suitable for our Ergerite height adjustable tables.

HSLEG-CASTOR-4

Set of 4

\$19.95



Available in 2
heights



Ergerite – Rectangular Table – 120x60cm

HS061

52-74cm high \$174.95

HS061-1

38-60cm high \$174.95



Set of 4
Save
\$1985



Ergerite – Cut Away Table – 90cm

HS093 52-74cm high \$179.95

HS093-1 38-60cm high \$179.95

Ergerite – Cut Away Table – Set of 4

HS093K 52-74cm high \$699.95

HS093K-1 38-60cm high \$699.95

Suitable
from early
childhood to
high school





SafeSpace™ Toddler Furniture

The Baby & Toddler Furniture range from MTA, SafeSpace, is uniquely designed and features soft, safe and rounded edges, coupled with durable, non-toxic, easy-to-clean surfaces. Create a new safe and vibrant space for your baby and toddler rooms. Made with a plywood core, 'maple' melamine finish and soft, padded vinyl edging. Assembly required.



~~\$1,189.85~~
\$1,139⁹⁵
 Save \$49.90

SafeSpace – Cosy House & Cushions

A large comfortable play space for toddlers. Features a fabric roof, plywood frame and PVC padded seating. The low entrance allows for easy access for babies and toddlers. Measures 110(W) x 100(D) x 142(H)cm, base box is 40(H)cm. Kit includes the Cosy House (SST7101) and a set of 6 PVC Cushions (2 x DM01301). Contents may vary.

SST7101K Cosy House & Cushions **\$1,139.95**
 SST7101 Cosy House only **\$949.95**



SST7101

SST7101K



Table & Stools
\$489⁹⁵
 Save \$29.75

SafeSpace – Toddler Group Table & Stools

Excellent table for young toddlers to sit and play. Kit includes 1 x Group Table (SST2103) and 4 x Toddler Stools (SST5106). Stool is 28(dia) x 16.5(H)cm. Table is 105(W) x 35(H)cm. Contents may vary.

SST2103K Toddler Group Table & Stools **\$489.95**
 SST5106 Round Stool **\$59.95**
 SST2103 Toddler Group Table **\$259.95**



~~\$789.90~~
\$749⁹⁵
 Save \$39.95

SafeSpace – Cubi Mirror with Cushions

Fantastic for children to explore the sense of self. Features 3 entry points, a side mirror and a ceiling mirror. Measures 80(W) x 80(D) x 80(H)cm. Kit includes Cubi Mirror Play Space (SST1015M) and a set of 10 cushions (EZ50513). Contents may vary.

SST1015ME

\$749.95

SafeSpace – Rectangular Low Table and 4 Mushroom Stools

Kit includes 1 x Rectangular Low Table (SST1209M) and 4 x Mushroom Stools (SST1005M). Contents may vary.

SSTKIT3M

\$739.95

~~\$769.75~~
\$739⁹⁵

Save \$29.80



SafeSpace – Rectangular Low Table

Measures 120(L) x 60(W) x 25(H)cm.

SST1209M

\$369.95

SafeSpace – Mushroom Stool

Measures 30(dia) x 15(H)cm.

SST1005M

\$99.95



SafeSpace – Toddler Chair with Harness

This stackable chair features a 3-point harness and an easy to clean finish. Seat height measures 20(H)cm.

SST1025M

\$99.95

~~\$724.75~~
\$689⁹⁵

Save \$34.80



SafeSpace – Round Table & 4 Stools

Kit includes 1 x Round Table (SST4204BR) and 4 x Stools (SST5003BR). Table measures 80(dia) x 35(H)cm. Stools measure 30(dia) x 20(H)cm. Contents may vary.

SSTKIT1BR

\$689.95



~~\$1,384.80~~
\$1,319⁹⁵

Save \$64.85

SafeSpace – Lounge & Table Set

Kit includes 2 x Single Seat Sofas (SST5001BR), 1 x Double Seat Sofa (SST5002BR) and 1 x Square Table (SST4208BR). Double Sofa measures 90(W), Single Sofa measures 40(W), Table measures 80(W)cm. Contents may vary.

SSTKIT2BR

\$1,319.95



SafeSpace – Toddler Round Table

Measures 80(dia) x 35(H)cm.

SST4204BR

\$364.95



SafeSpace – Toddler Square Table

Measures 80(W) x 80(D) x 35(H)cm.

SST4208BR

\$364.95



SafeSpace™ Toddler Furniture

This range features rounded corners for safety and a wipe-clean melamine finish. All the pieces are fully compatible with the existing SafeSpace range, so will complement each other in any toddler room. This natural looking range will allow educators to create a safe space for toddlers while making the environment bright and inviting. Both the original and new SafeSpace ranges can be mixed together to create comfortable play spaces.



~~\$879.80~~
\$839⁹⁵
 —
 Save \$39.85

SafeSpace – Corner Furniture Kit

A flexible furniture kit for toddlers. Features curved corners for safety. Kit includes 1 x Corner Cabinet (SST3030), 2 x Open Back Cabinets (SST3027) and 1 x Curved Divider (SST3031).

SST3030K Set of 4 **\$839.95**



SafeSpace – Low Book Shelf

Low book storage for toddlers. Measures 84.5(W) x 36(D) x 36(H)cm. Each section measures 9(D)cm.

SST1032 **\$299.95**





SafeSpace – Storage Cabinet & Mirror

Storage cabinet features a mirror on one side. Measures 90(W) x 37(D) x 60(H)cm.

SST1018BR

\$429.95



SafeSpace – Locker Cabinet & Mirror

Storage cabinet features a mirror on one side. Measures 90(W) x 37(D) x 60(H)cm.

SST2246BR

\$419.95



SafeSpace – Toddler Room Divider with Mirror

Features a mirror on one side. Measures 90(W) x 20(D) x 35(W)cm.

SST1020BR

\$269.95



SafeSpace – Bench Storage and Mirror Unit

A versatile seat and storage unit. Features 3 drawers, a padded seat and a mirror on one side. Measures 114(W) x 40.5(D) x 30.5(H)cm. Supplied assembled.

SST2048M

\$534.95



SafeSpace – Book Storage Unit

Features 3 shelves and fits big books. Measures 90(W) x 37(D) x 60(H)cm.

SST1019BR

\$384.95



SafeSpace – Storage Cabinet & Mirror Divider

A room divider and storage cabinet in one! It measures 90(L) x 37(W) x 37(H)cm. Illustrated accessories not included.

SST1016BR

\$419.95



SafeSpace – Open Back Cabinet

Features rounded corners for safety plus lots of easily accessible storage. Measures 85(W) x 37(D) x 60(H)cm. Can be used with the Curved Divider (SST3031).

SST3027

85 x 37 x 60cm \$209.95



SafeSpace – Low Cabinet

Features rounded corners for safety, shelving and a mirror on the back panel. Measures 85(W) x 37(D) x 37(H)cm.

SST3016

85 x 37 x 37cm \$239.95

A sensory room divider



SafeSpace – Curved Divider

This clear acrylic divider can be attached to most of the all-wooden versions of the SafeSpace Range. Provides a fun, sensory experience for toddlers. Measures 82(W) x 60(H)cm.

SST3031

82 x 60cm \$199.95



Dressing Table & Stool

\$339⁹⁵

Save \$19.95

SafeSpace – Toddler Dressing Table & Stool

A role play furniture set for toddlers. Features a large, safety mirror, padded seat and rounded corners for safety. Kit includes Dressing Table 76(W) x 40(D) x 74(H)cm (SST3023) and Stool (SST5003BR). Contents may vary.

SST3023K

Dressing Table & Stool \$339.95

SST3023

Dressing Table only \$269.95



SafeSpace – Corner Cabinet

A versatile shelving unit. Features rounded corners for safety plus easily accessible storage. Measures 60(W) x 60(D) x 60(H)cm. Can be used with the Curved Divider (SST3031).

SST3030

60 x 60 x 60cm \$259.95



SafeSpace – Storage Cabinet & Mirror

Features rounded corners for safety plus storage on one side and a mirror on the other side. Measures 85(W) x 37(D) x 60(H)cm. Can be used with the Curved Divider (SST3031).

SST3018

85 x 37 x 60cm \$264.95

Cots & Sleeptime



SafeSpace™

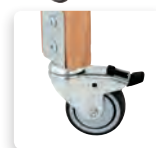
Our exclusive range of SafeSpace cots has been designed specifically for use in early learning educational centres. This range offers a stylish design, beautiful finishes and all designed with infant comfort and safety in mind. These functional and stylish cots are an excellent choice for keeping infants secure and comfortable at sleep time.



SST113-N



SST113-W



SafeSpace – Compact Cot & Mattress

This high quality and sturdy wooden cot features an ergonomic design with large lockable castors and an easy-to-use and secure dual-action locking mechanism. The cot measures 110(W) x 71(D) x 110(H)cm with castors and 100(H)cm without castors. The cot features an adjustable base height which can be adjusted from 44 to 62(H)cm from the ground including castors. It is supplied with a cot mattress which measures 103(W) x 63(D) x 10(H)cm. Available in both white and natural colours.

SST113-N
SST113-W

Natural \$449.95
White \$449.95



SafeSpace – Mattress

This firm mattress is compatible with all SafeSpace cots. It complies to the sleep surfaces test for firmness standard AS/NZS 8811.1:2013. Measures 103(W) x 63(D) x 10(H)cm.

NAS132 \$99.95

Features

- Safe and secure end panels for comfort and hygiene
- Compact size for child care nursery sleep rooms
- Easy-to-use drop-side mechanism
- Dual action drop-side release
- Embedded teething rail on all 4 sides
- Adjustable bed height
- Large 10cm lockable castors
- Certified to AS/NZS 2172:2013 Cots and AS/NZS 8811.1:2013 Sleep surfaces

Cot, Mattress & Drawer
Save
\$79⁹⁵



Blanket drawer

SafeSpace – Compact Cot, Mattress & Blanket Drawer

Excellent storage for blankets and sheets, and is compatible with both the SafeSpace Compact and Ergonomic Cots (not Evacuation Cot). Features internal draw divider, magnetic closure and is fully assembled. Can be retro-fitted to all SafeSpace Compact and Ergonomic Cots. Measures 100(W) x 62(D) x 16(H)cm. Kits include the Compact Cot, Mattress and Drawer.

SST113-NB Compact Cot, Mattress & Blanket Drawer – Natural \$649.95
SST130-N Blanket Drawer for Cots – Natural \$279.95
SST113-WB Compact Cot, Mattress & Blanket Drawer – White \$649.95
SST130-W Blanket Drawer for Cots - White \$279.95

Set of 3
Save
\$5⁹⁰



Max & Rosie – Waffle Blankets

This soft and lightweight blanket is made from cotton, making it very breathable. It measures 118(W) x 140(L) cm. Available in 3 colours.

BUB390K	Set of 3 Blankets	\$113.95
BUB353	Blue	\$39.95
10 or more	Each set	\$36.95
BUB377	Cream	\$39.95
10 or more	Each set	\$36.95
BUB360	Mint Green	\$39.95
10 or more	Each set	\$36.95


SafeSpace™

Our range of SafeSpace cots has been designed for use in early learning centres, with infant comfort and safety in mind. The range of compact, ergonomic and evacuation cots are available in both white and natural timber colours and all cots can be used with the same mattress. An excellent choice for keeping infants secure and comfortable.



SafeSpace – Ergonomic Cot & Mattress

This high quality and sturdy wooden cot is designed for both infant and educator comfort. It features an ergonomic design with a raised base height, large lockable castors and an easy-to-use and secure dual-action locking mechanism. The cot measures 110(W) x 71(D) x 138(H)cm with castors and 128(H)cm without castors. The base of the mattress measures 72.5(H)cm from the ground including castors. It is supplied with a cot mattress which measures 103(W) x 63(D) x 10(H)cm. Available in both white and natural colours.

SST131-N

 Natural **\$539.95**
SST131-W

 White **\$539.95**


SafeSpace – Mattress

This firm mattress is compatible with all SafeSpace cots. It complies to the sleep surfaces test for firmness standard AS/ NZS 8811.1:2013. Measures 103(W) x 63(D) x 10(H)cm.

NAS132
\$99.95

Features

- Ergonomic design with increase base height for staff comfort and safety
- Safe and secure end panels for comfort and hygiene
- Compact size for child care nursery sleep rooms
- Easy-to-use drop-side mechanism
- Dual action drop-side release
- Embedded teething rail on all 4 sides
- Large 10cm lockable castors
- Certified to AS/NZS 2172:2013 Cots and AS/ NZS 8811.1:2013 Sleep surfaces

Cot, Mattress & Drawer
Save
\$995


 Blanket
drawer


100% cotton

Set of 3
Save
\$990

Three Colour Cot Sheet Pack

Each Max & Rosie cot sheet set includes a flat sheet and a fitted sheet. They will work with most cots but are designed for the compact cots such as NO10177 & NO10179. Made from 100% cotton. The fitted sheet measures 105(L) x 69(W) x 12(H) cm and the flat sheet is 120 x 150cm. Available in 3 colours.

BUB824K	Set of 3 Sheet Sets	\$139.95
BUB261	Baby Blue	\$49.95
10 or more	Each set	\$46.95
BUB278	Mint Green	\$49.95
10 or more	Each set	\$46.95
BUB051	White	\$49.95
10 or more	Each set	\$46.95

SafeSpace – Ergonomic Cot, Mattress & Blanket Drawer

Excellent storage for blankets and sheets, and is compatible with both the SafeSpace Compact and Ergonomic Cots (not Evacuation Cot). Features internal draw divider, magnetic closure and is fully assembled. Can be retro-fitted to all SafeSpace Compact and Ergonomic Cots. Measures 100(W) x 62(D) x 16(H)cm. Kits include the Compact Cot, Mattress and Drawer.

SST131-NB Ergonomic Cot, Mattress & Blanket Drawer – Natural **\$719.95**
SST130-N Blanket Drawer for Cots – Natural **\$279.95**
SST131-WB Ergonomic Cot, Mattress & Blanket Drawer – White **\$719.95**
SST130-W Blanket Drawer for Cots - White **\$279.95**


Cots & Sleeptime



SafeSpace – Evacuation Ergonomic Cot & Mattress

Designed for evacuations this ergonomic cot includes a reinforced frame, lockable castors, luminous safety sticker, dual-action mechanism and red teething rails. It measures 110(W) x 71(D) x 140.5(H)cm with castors, with the base slats measure 75(H)cm from the ground including castors. Supplied with a mattress. Available in both white and natural colours.colours.

SST132-N
SST132-W

Natural \$629.95
White \$629.95



Cot Mattress

This mattress is intended to be used with both the metal cots. Mattress colours may vary. Cot mattress measures 101(L) x 61(W) x 7(H)cm.

DF15

\$109.95

SafeSpace – Mattress



This firm mattress is compatible with all SafeSpace cots. It complies to the sleep surfaces test for firmness standard AS/NZS 8811.1:2013. Measures 103(W) x 63(D) x 10(H)cm.

NAS132

\$99.95

Certified to all three required Safety Standards:

1. Cot: AS/NZS 2172:2013 – Cots
2. Mattress: AS/NZS 8811.1:2013 - Sleep surfaces - Test for firmness
3. Castors: SGS Load and durability test

Metal Ergonomic Cot with Drop-Side & Mattress

Featuring a raised bed height for easy access and back health. Includes Evacuation Cot, extension legs, shelf and mattress. Measures 105.5(L) x 66(W) x 138(H) cm (with castors). Mattress base: 67(H)cm. Top of lowered drop-side 104(H)cm.

TTK024K

\$579.95



\$619.90
\$579.95
—
Save \$39.95



Metal Evacuation Cot with Drop-Side & Mattress

Set includes Metal Cot and Waterproof Cot Mattress. Metal Cot measurements 105.5(L) x 66(W) x 114.5(H)cm (with castors). Floor to mattress to base: 45(H)cm, floor to top of lowered drop-side 82(H)cm.

TTK022

\$469.95

Wall Rack and 6 Mats 5cm Thick



This kit consists of 1 wall rack (KM103) and 6 mats – 5cm thick (ZZQLD119-D).

ZZQLD119K \$522.95

~~\$549.65~~
\$522.95

Save \$26.70

Wall Rack and 10 Mats 2.5cm Thick



This kit includes 1 wall rack (KM103) and 10 mats – 2.5cm thick (ZZQLD302-D).

ZZQLD302K \$694.95

~~\$729.45~~
\$694.95

Save \$34.50



Two thicknesses
available 2.5cm
or 5cm

130cm (L)
55cm (W)

Sleeping Peg Mats

These large mats have firm thick foam padding and an extra-heavy vinyl cover that resists tears, retards flames and sheds stains. They measure 130(L) x 55(D)cm and are available in 2 thicknesses. Colours may vary.

ZZQLD119-D 5cm thick \$79.95
ZZQLD302-D 2.5cm thick \$65.95

Wall Rack

This wall rack holds 6 to 8, 5cm thick or 8 to 12, 2.5cm thick peg mats. Illustrated peg mats sold separately.

KM103 \$69.95



Peg Sleeping Mat Storage Trolley

A metal storage trolley for our sleep mats. Measures 122(W) x 64(D) x 120(H) cm. Can hold 20 x 5cm mats and 40 x 2.5cm mats. Mats not included.

SUN381 122x64x120cm \$139.95



Max & Rosie – Sleeping Peg Mat Sheet Set

This Peg Mat Sheet Set consists of a fitted and a flat sheet. Ideal for use with peg mats (ZZQLD119-D and ZZQLD302-D). The sheet set is made from cotton and polyester. The flat sheet measures 75 x 130 cm and the fitted sheet is 61 x 130cm.

BUB292 1 Fitted Sheet + 1 Flat Sheet \$36.95
10 or more sets Each set \$34.95



Beds & Peg Mats



mta
S P A C E S

140cm (W)
56cm (D)
12.5cm (H)

Children's Bed

Extremely sturdy and stable bed that is lightweight and durable. Tubular frame slides into high impact corners and the cover tightens with Velcro. They are easy to clean and stackable. The beds measure 140(W) x 56(D) x 12.5(H)cm. Supplied assembled.

DM1000

\$79.95



Features

- Stackable
- Supplied assembled
- Screwless rounded plastic corners
- Breathable, washable and durable mat
- No tools - sturdy construction



mta
S P A C E S

Mobility Frame for Stacking Bed

This solid metal frame on castors can hold up to 20 beds. Suitable for both the DM1000 and DM1005 beds.

DM1000-66

\$139.95



mta
S P A C E S

120cm (W)
50cm (D)
12.5cm (H)

Children's Compact Bed

Extremely sturdy and stable bed that is lightweight and durable. Tubular frame slides into high impact corners and the cover tightens with Velcro. They are easy to clean and stackable. The bed measures 120(W) x 50(D) x 12.5(H) cm. Supplied assembled.

DM1005SB

\$74.95



mta
S P A C E S

Mobility Frame for Stacking Bed

This solid metal frame on castors can hold up to 20 beds. Suitable for both the DM1000 and DM1005 beds.

DM1000-66

\$139.95



Rainbow Bed Mat

A set of colourful, firm sleeping mats. Features flame retardant vinyl in 5 different colours. Each mat measures 120(L) x 6(D) x 55(W)cm.

KRBM-D

Set of 5 colours \$359.95



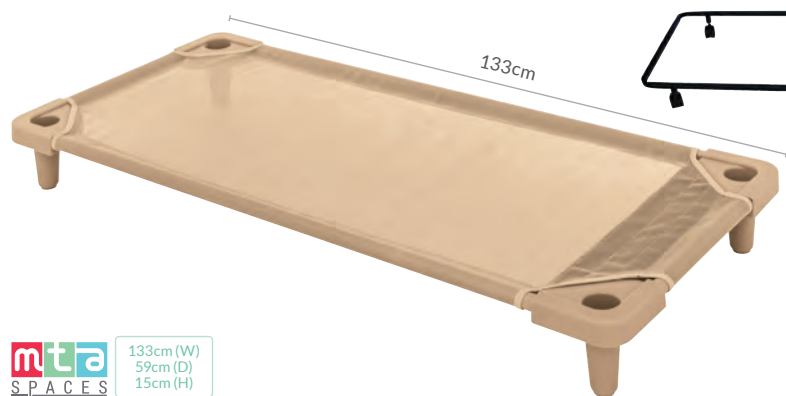
mta
S P A C E S

Folding Kindy Mat

A soft padded mat that conveniently folds into 4 sections for ease of storage and versatility. Mat measures 124(L) x 2.5(D) x 52(W)cm. Illustrated cushion not included. Colours may vary.

ZZQLD170-D

\$59.95



mta
SPACES

133cm (W)
59cm (D)
15cm (H)

Slimline Stacking Bed

A sturdy sleeping bed that is lightweight and compact when stacked. Bed measures 133(W) x 59(D) x 15(H)cm. Simple assembly required.

SUN8961-S

\$74.95

Features

Streamline storage; Screwless stable plastic corners; Breathable, washable and durable mat; Powder-coated heavy duty frame; Infill mat covers to corners

*Our most
slimline bed!*



mta
SPACES

Bed Mobility Frame for Slimline Stacking Bed

A metal frame with 4 castors suitable for stacking the Slimline Bed.

SUN8901

\$114.95



mta
SPACES

101.5cm (W)
58.5cm (D)
15cm (H)

Compact Slimline Stacking Bed

A compact version of our best selling slimline bed. Measures 101.5(W) x 58.5(D) x 15(H)cm. Simple assembly required.

SUN8962

\$59.95



mta
SPACES

Compact Slimline Stacking Bed Mobility Frame

A metal frame with 4 castors. Suitable for the Compact Slimline Bed (SUN8962).

SUN8902

\$84.95

130cm (W)
54cm (D)
13cm (H)

Weplay - Rest Easy Bed

Extremely sturdy and stackable bed that is lightweight and durable. They are easy to clean and measure 130(W) x 54(D) x 13(H)cm. Supplied assembled.

WY701-1

\$109.95

Features

Supplied assembled; Screwless stable plastic corners; Breathable, washable and durable mat; Powder-coated heavy duty frame; Infill mat covers to corners



Weplay - Bed Base Mobility Set

These 4 corners with wheels can hold up to 15 Rest Easy Beds for ease of storage.

WY701-4

\$89.95

Max & Rosie - Stacking Bed Sheet Set - Blue

This Stacking Bed Sheet Set consists of a fitted and a flat sheet in one. It is ideal to use with the Rest Easy Bed, Slimline Stacking Bed or the Children's Bed. The product contains a cotton bag for storage. Made from polyester-cotton, the flat sheet measures 76 x 140cm and the fitted sheet is 56 x 140cm.

BUB322

1 Fitted Sheet + 1 Flat Sheet

\$37.95

10 or more sets

Each set **\$34.95**



Lounges & Ottomans

Stockholm Spaces – Complete Classroom Reading Lounge

Perfect for a classroom reading space. Kit includes 1 x Reading Lounge (ACH8745) and 2 x Semi Circle Seats (ACH87451). Entire unit measures 203(W) x 90(D) x 59(H)cm. Seat height is 33(H)cm. Contents may vary.

ACH8745K

Set of 3 \$999.95



stockholm

~~\$1,199.85~~
\$999.95

Save \$199.90



Stockholm Spaces – Classroom Reading Lounge

Measures 106(W) x 91(D) x 59(H)cm. Seat height is 33(H)cm.

ACH8745

106 x 91 x 59cm \$649.95



Stockholm Spaces – Classroom Reading Semi Circle Seat

Measures 90(W) x 49(D) x 33(H)cm. Seat height is 33(H)cm.

ACH87451

90 x 49 x 33cm \$274.95



Billyara - Aboriginal Art Poufs

A set of 5 poufs featuring authentic Aboriginal art by artist Billyara. Each measures 30(dia) x 20(H)cm.

SPP330

Set of 5 \$399.95



stockholm

Stockholm Spaces – Circular Table with Stools

Includes a round table with 4 nesting stools. Each stool features a storage section. Table measures 67(DIA) x 51(H)cm. Stool measures 45(W) x 31(D) x 33(H)cm.

ACH90011

Set of 5 \$619.95



Natural Spaces - Children's Sofa Kit

A modern children's lounge set. Kit includes 1 x Double Sofa (DM71902) and 2 x Single Sofas (DM71901). Contents may vary.

DM719K

Kit \$599.95



~~\$669.85~~
\$599.95
—
Save \$69.90



Natural Spaces – Double Children's Sofa

Measures 92(W) x 45(D) x 46(H)cm.

DM71902



\$269.95



Natural Spaces – Single Children's Sofa

Measures 51(W) x 45(D) x 46(H)cm.

DM71901



\$199.95

ERGERITE

Ergerite – Curved Ottomans

High quality ottomans for flexible spaces. Use with included castors for a 36(H)cm school height, or without castors for a 32(H)cm early childhood height. Each measures 106(W) x 30(D)cm. Kit includes 1 x each colour. Contents may vary.

UB007K	Set of 4	\$1,019.95
UB007-R	Red	\$269.95
UB007-B	Blue	\$269.95
UB007-G	Green	\$269.95
UB007-A	Orange	\$269.95
4 or more**	Each	\$251.95

**4 or more of any one size and colour.



Suitable
for schools
and early
childhood

Set of 4
\$1,019.95
—
Save \$59.85



Set of 4
\$419.95

—
Save \$19.85

Suitable
for schools
and early
childhood



ERGERITE

Ergerite – Square Ottomans

High quality ottomans for flexible spaces. Use with included castors for a 36(H)cm school height, or without castors for a 32(H)cm early childhood height. Each measures 40(W) x 40(D)cm. Kit includes 1 x each colour. Contents may vary.

UB008K	Set of 4	\$419.95
UB008-R	Red	\$109.95
UB008-B	Blue	\$109.95
UB008-G	Green	\$109.95
UB008-A	Orange	\$109.95
4 or more**	Each	\$104.50

**4 or more of any one size and colour.

Lounges & Ottomans

Natural Woven Seat

This woven seat measures 40(dia) x 28(H)cm. The seat has a sturdy metal frame. Kit includes 4 x Woven Seats.

SHT13011K

Set of 4 \$199.95

SHT13011 \$59.95

Set of 4
Save
\$39⁸⁵



Create a
welcoming space

stockholm
spaces



Stockholm Spaces – Children's Armchair Kit

A comfortable chair for children that features a wood and metal frame. Each chair measures 43(W) x 48(D) x 63(H)cm. Seat height is 23(H)cm. Kit includes 2 x Single Armchairs (ACH8043). Contents may vary.

ACH8043K

Set of 2 \$265.95

ACH8043

Each \$139.95



Set of 2
\$265⁹⁵
—
Save **\$13.95**



Save
\$59⁹⁵



Aalto – Classic Three Seater Lounge Kit

This lounge is made from commercial quality fabric with a high grade stain protection treatment. It features a strong wooden frame and comfortable padded seat. Each lounge measures 146(W) x 39(D) x 32(H)cm. Kit includes 2 x Classic Three Seater Lounges (ALT100). Contents may vary.

ALT100-2

2 pieces \$1,499.95



\$673.70
\$519⁹⁵

Save **\$153.75**

stockholm
spaces

Stockholm Spaces – Round Table & Woven Chairs

A great set for creating small play spaces, eating or for role play. Kit includes 4 x Woven Seats (UBF200) and 1 x Stockholm Spaces Round Table - 50(H)cm (STK75R50). Contents may vary.

STK75R50K

\$519.95

Traditional Lounge Set



Comfortable lounge set for children. Made with a durable wooden frame and easy-to-clean PVC outer. Kit includes 2 x Single Lounges (TF352) and 1 x Double Lounge (TF353). Contents may vary.

TF352K

3 pieces \$729.95

Children's Traditional Single Lounge

Measures 65(W) x 50(D) x 50(H)cm.

TF352

\$219.95

Children's Traditional Double Lounge

Measures 87(W) x 50(D) x 50(H)cm.

TF353

\$369.95



\$809.85
\$729⁹⁵
—
Save **\$79.90**

43cm (W)
41cm (D)
53cm (H)

Set of 4
\$249⁹⁵
—
Save **\$13.85**

Woven Wicker Chair

A set of 4 woven chairs that are perfect for the classroom. Each chair measures 43(W) x 41(D) x 53(H) cm with a seat height of 26cm. Kit includes 4 x Woven Wicker Chairs (UBF200). As chairs are made from natural materials, the colour may vary slightly. Contents may vary.

UBF200-4 Set of 4 **\$249.95**
UBF200 Each **\$65.95**



*Excellent for classrooms
& library foyers*

Features
high grade
stain
protection



alto

174cm (W)
84cm (D)
78cm (H)

Aalto – Full Size Sofa – 2.5 Seater

A comfortable 2.5 seater adult lounge featuring commercial polyester/cotton fabric, stain protection, wood frame and legs, and comfortable padding. Measures 174(W) x 84(D) x 78(H)cm. To clean blot spills immediately.

ALT400

\$1,149.95

Features high
grade stain
protection



Aalto – Full Size High Back Arm Chair

This adult sized arm chair is excellent for foyers and classrooms. It is made from commercial polyester/cotton, high level stain protection, solid wood frame and legs and thick, foam padding. It measures 79(W) x 76(D) x 98(H)cm. To clean blot any spills immediately.

ALT300

\$749.95

alto

79cm (W)
76cm (D)
98cm (H)

mta
SPACES

Set of 4
\$309⁹⁵
—
Save **\$29.95**



Woven Wicker Adult Chairs

Natural, woven wicker chairs for adults and teenagers. Each chair measures 59(W) x 54(D) x 75(H) cm at the widest part. Seat height measures 41(H)cm.

UBF300-2
UBF300

Set of 2 **\$309.95**
Each **\$169.95**



Carpets & Cushions



Classroom Carpets

These brightly coloured and high quality carpets are soft and comfortable. Each carpet features a high quality 900gsm deep pile as well as a durable non-slip rubber backing. These carpets are a colourful and durable option for the classroom.



Globe Carpet

DM3356

195 x 195cm \$549.95

195cm (L)
195cm (W)



Alphabet and Number Carpet

DM3023

195 x 195cm \$549.95

195cm (L)
195cm (W)



Rainbow Carpet

DM3354

195 x 240cm \$549.95

195cm (L)
240cm (W)



Shapes and Words

DM3352

195 x 240cm \$549.95

195cm (L)
240cm (W)



Insect Carpet

DM3362

195 x 240cm \$549.95

195cm (L)
240cm (W)



Shapes, Numbers and Words Carpet

DM3351

195 x 240cm \$549.95

195cm (L)
240cm (W)



Carpet for 30 Children

There really is a place for everyone on this giant, kid-friendly carpet. With lots of big, bold squares in 5 vibrant colours, this giant-sized carpet provides plenty of seating options for the whole class! The extra-roomy squares give each child lots of space to sit and play, while the colour-coded rows make it easy to divide the class into small groups. This 365(L) x 270(W) cm carpet seats up to 30 children.

LS852

365 x 270cm \$1,450.95



Calming Colours Carpet

A great natural toned carpet for the classroom. This huge carpet features spaces for 30 children. Made from a soft, high pile carpet with a non-slip backing. The carpet design allows for small group work and each child has plenty of individual space.

LS309

365 x 270cm \$1,450.95



360cm (L)
240cm (W)

Alphabet Blocks Giant Carpet

It's never too early to start learning the A to Zs. This decorative rug provides a perfect, cosy space for playing and learning. Carpet has a skid-resistant backing and deep nylon pile. Measures 360(L) x 240(W) cm.

CFK3802

240 x 360cm \$899.95



Carpets & Cushions

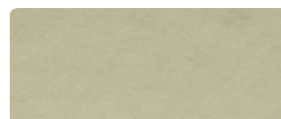
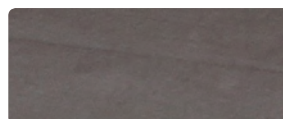


200cm
(dia)

Round Floor Rug

These lightweight floor rugs are ideal for any classroom. Each measures 200(dia)cm. Available in 4 colours.

DM33095	Grey	\$259.95
DM33096	Beige	\$259.95
DM33097	Blue	\$259.95
DM33098	Green	\$259.95



BC18

180cm (L)
240cm (W)

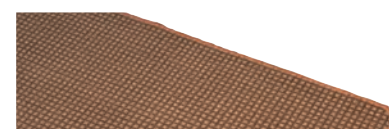
BC36

360cm (L)
200cm (W)

Enviro Carpet

This environmentally friendly carpet is made from end of spool material, which creates a unique and sustainable design. Available in 2 sizes: 180(L) x 240(W)cm (BC18) and 360(L) x 200(W)cm (BC36). Colours and patterns shown are indicative only, colours and designs will vary.

BC18	180 x 240cm	\$399.95
BC36	200 x 360cm	\$499.95



MD5001KC

240cm
(dia)

MD5002KC

240cm (L)
240cm (W)

Talkaround Carpets

The natural-coloured carpets are a beautiful addition to any room. They are suitable for circle time, storytelling and also are excellent for small group work. Each carpet measures 240(W)cm and features a skid-resistant backing. Available in 2 shapes.

MD5001KC	Round - 240cm	\$649.95
MD5002KC	Square - 240cm	\$649.95





Nature's Colours Sitting Carpet

This simple, earth-tone rug is great for classroom organisation. Each coloured space makes a perfect place for children to sit on and have plenty of space, all while being surrounded by a literary border. Carpet has a skid-resistant backing and deep nylon pile. Measures 360(L) x 220(W)cm.

CFK8112

220 x 360cm \$859.95

360cm (L)
220cm (W)

Owl-Phabet Tree Carpet

A large, natural toned carpet. The beautiful tree design features an owl and each letter of the alphabet. Carpet has a skid-resistant backing and deep nylon pile. Measures 360(L) x 240(W)cm.

CFK0728

240 x 360cm \$899.95

360cm (L)
240cm (W)

Calming Circles Giant Carpet

This patterned rug features the Nature's Colours Collection in a calming design that will provide a comforting feeling to any room. Complete with an Alphabet border. Carpet has a skid-resistant backing and deep nylon pile. Measures 360(L) x 240(W)cm.

CFK7728

240 x 360cm \$899.95

360cm (L)
240cm (W)

Carpets & Cushions

300cm (L)
200cm (W)

Deco Carpet

A carpet featuring a modern and simple design. Features a non-slip backing. Features a 3mm pile and a subtle grey design. Measures 300(W) x 200(L)cm.

DM3328

300 x 200cm \$369.95



210cm (L)
150cm (W)

Deco Carpet

A decorative grey carpet with a non-slip backing. Features a 3mm pile and a subtle grey design. Measures 200(W) x 150(L)cm.

DM3329

200 x 150cm \$259.95



mta
SPACES

300cm (L)
200cm (W)

Leaf Oval Carpet

A beautiful, natural design carpet. Features a loop pile and a non-slip backing. Measures 300(W) x 200(L)cm.

DM3025

300 x 200cm \$379.95





Butterfly Fun 123 ABC Carpet

A beautiful butterfly carpet for the classroom. Encourages children to learn numbers 1-10 and also the alphabet. Carpet has a skid-resistant backing and deep nylon pile. Measures 285(L) x 220(W)cm.

CFK3506 220 x 285cm \$649.95

285cm (L)
220cm (W)



365cm (L)
256cm (W)

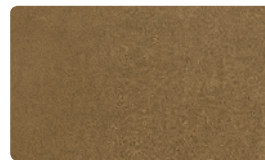
Large Classic Carpet

Features a soft loop pile and a non-slip back. Measures 256(W) x 365(L)cm.

CFK4000 Blue \$759.95

CFK3010 Green \$759.95

CFK7010 Brown \$759.95



SPP102



365cm (L)
256cm (W)

Machine Washable Super Soft Rug

Super soft, high loop pile rugs for the classroom. These rugs feature a shaggy loop pile and a latex non-slip backing. Machine washable up to 40°C. Measures 150(L) x 100(W) cm. Accessories not included.

SPP102 Green \$164.95

SPP101 Blue \$164.95



SPP101

Carpets & Cushions



Memory Foam Soft Floor Mats

These floor mats are super-soft to touch. They are made from polyester-velvet and feature memory-foam padding and a non-slip backing. They are excellent for a baby and toddler space as they provide a soft and sensory experience.

Rectangular Soft Floor Mats

Kit includes the Pebbles (LIJ2061), Waves (LIJ2062) and Greenery (LIJ2063) Soft Floor Mats. Each measures 150(W) x 220(L)cm. Contents may vary.

LIJ206-3 Set of 3 \$349.95

~~\$389.85~~
\$349⁹⁵

Save \$39.90

Perfect for babies & toddlers



LIJ2061



LIJ2062



LIJ2063

Pebbles

Measures 150(W) x 220(L)cm.

LIJ2061

\$129.95

Waves

Measures 150(W) x 220(L)cm.

LIJ2062

\$129.95

Greenery

Measures 150(W) x 220(L)cm.

LIJ2063

\$129.95

Super soft memory foam!



LIJ2064



LIJ2065

Soft Floor Mat

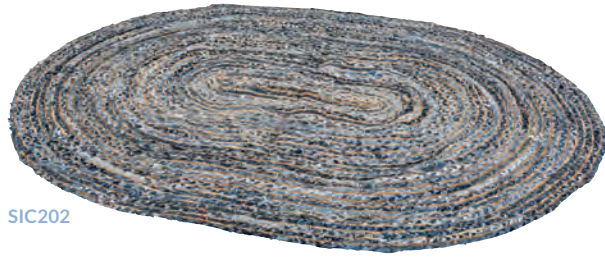
Measures 150(dia)cm.

LIJ2064

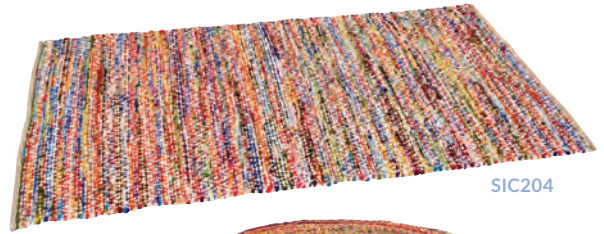
LIJ2065

Ocean \$109.95

Pastel \$109.95



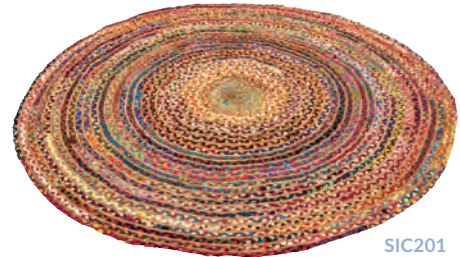
SIC202



SIC204



SIC203



SIC201



Fair Trade - Chindi Hand Woven Recycled Floor Rug

Unique and handmade rugs using recycled jute and cotton fabric. Each mat is a one-of-a-kind and made under Fair Trade conditions in India. These heavy weight carpets are brightly coloured and soft to sit on.

SIC201	150cm	\$229.95
SIC202	200 x 150cm	\$279.95
SIC203	300 x 250cm	\$629.95
SIC204	180 x 100cm	\$229.95



Carpets & Cushions

\$763.20
\$499⁹⁵

Save \$263.25



Mix 'n' Match Decorative Cushions Kit

Kit includes 24 different, machine washable cushion covers (50cm) and 12 thick foam inserts (DM12015). Contents may vary.

DM12015K

36 pieces \$499.95



LIJ046

LIJ047

LIJ048



LIJ049

LIJ050

LIJ051



Outdoor Cushion Kit

Each square cushion measures 100(W)cm and includes a thick foam insert. Contents may vary.

LIJ051K

6 pieces \$699.95

\$799.40
\$699⁹⁵

Save \$99.45



Floor Seats & Trolley

Kit includes the Padded Floor Seats (SUN323) & Metal Trolley (SUN373). Contents may vary.

SUN323K

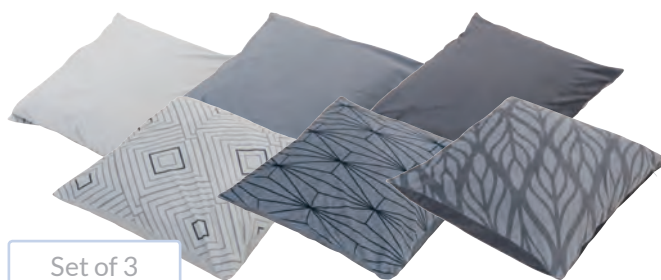
19 pieces \$429.95



\$449.90
\$429⁹⁵

Save \$19.95

Cushions feature a non-slip base



Set of 3
Save
\$39⁷⁵

Double sided



MTA Spaces - Deco Cushions

Double-sided printed and plain cushions. Kit includes 3 x cushions (50cm) with machine washable covers and thick foam inserts. Contents may vary.

LIJ2084K

Set of 3 \$109.95



100cm (L)
100cm (W)

Giant Comfy Cushions - Primary Colours

Kit includes 1 x each colour. Contents may vary.

DF07 100cm - Set of 4 \$369.95



75cm (L)
75cm (W)

Comfy Cushions - Primary Colours

Kit includes 1 x each colour. Contents may vary.

DF653K 75cm - Set of 4 \$299.95



Outdoor Play House

A wonderful indoor/outdoor play house. Excellent for creating fun play spaces or quiet reading nooks. Features a wooden floor and pitched roof. Made from outdoor treated pine. Measures 156(W) x 100(D) x 170(H)cm.

DM1049

\$1,149.95



Harmony Education – Outdoor Teepee

Create wonder in outdoor play spaces with this teepee. Made from sustainable eucalyptus timber, this teepee is suited for outdoor use. Measures 176(W) x 153(D) x 162(H)cm.

MR40118

\$999.95



90cm (W)
40cm (D)
60cm (H)

Outdoor Two Shelf Cabinet

A durable outdoor shelving unit. Made from eucalyptus and measures 90(W) x 40(D) x 60(H) cm. Suitable for use both indoors and outside, regular oiling is required to maintain timber finish. Assembly is required.

MR10246

\$344.95



Outdoor Furniture



100cm (W)
100cm (D)
28cm (H)



Outdoor Low Table

This wonderful low table is perfect for outdoor play. Made from eucalyptus and measures 100(W) x 100(D) x 28(H)cm. Suitable for use both indoors and outside, regular oiling is required to maintain timber finish. Assembly is required.

MR10247

\$334.95



Outdoor Play Fence Kit



Made from FSC eucalyptus and suitable for inside and outside. Kit includes 1 x Short (MR10244) and 1 x Long Fence (MR10245). Contents may vary.

MR1024K

\$294.95

~~\$309.90~~
\$294.95

Save \$14.95



88cm (W)
35cm (D)
52cm (H)

54cm (W)
35cm (D)
52cm (H)

Large Outdoor Fence

MR10245

\$174.95

Small Outdoor Fence

MR10244

\$134.95



110cm (W)
40cm (D)
71cm (H)

Outdoor Room Divider

Made from FSC eucalyptus and suitable for inside and outside. Can be used vertically or horizontally. Measures 110(W) x 40(D) x 71(H)cm.

MR40157

Each \$289.95



124cm (W)
110cm (D)
50cm (H)

Picnic Bench

A solid, outdoor picnic table for up to 6 children. The table and bench measures 124(W) x 110(D) x 50(H)cm. Assembly required.

DM12057

\$699.95



99cm (W)
80cm (D)
50cm (H)

Picnic Table

Made from FSC eucalyptus and suitable for inside and outside. Table measures 99(W) x 80(D) x 50(H)cm. Seat: 35(H)cm.

MR40170

\$289.95

High Table & Stacking Chairs

A wonderful outdoor furniture set. Each chair measures 39(W) x 41(D) x 65(H)cm, with a seat height of 35cm. The table measures 116(W) x 75(D) x 61(H)cm. Made from Eucalyptus hardwood. Oil as required to maintain wood condition. Assembly required. Kit includes 1 x Table (MR40139) and 2 x set of 2 Chairs (MR40138 - a total of 4 chairs are included). Made from durable FSC Eucalyptus hardwood. Contents may vary.

MR40200K

Set of 5 \$849.95

High Table

The table measures 116(W) x 75(D) x 61(H)cm.

MR40139

\$539.95

Stacking Chairs

Each chair measures 39(W) x 41(D) x 65(H)cm, with a seat height of 35cm.

MR40138

Pair \$189.95

116cm (W)
75cm (D)
61cm (H)

39cm (W)
41cm (D)
65cm (H)



Chairs are stackable

~~\$919.85~~
\$849⁹⁵
Save \$69.90

Low Table & Benches

Made from FSC Eucalyptus hardwood. Oil as required to maintain wood condition. Assembly required. Kit includes 1 x Table (MR40141) and 1 x set of 2 Benches (MR40140). Contents may vary.

MR40400K

Set of 3 \$649.95

Low Table

Measures 106(W) x 57(D) x 48(H)cm.

MR40141

\$409.95

Benches

Benches are sold as a pair. Measures 94(W) x 30(D) x 25(H)cm.

MR40140

Pair \$269.95

94cm (W)
30cm (D)
25cm (H)

106cm (W)
57cm (D)
48cm (H)



~~\$679.90~~
\$649⁹⁵
Save \$29.95

Sorting Table Kit

Set consists of the Sorting Table & Lid (MR40249) and Wooden Trays (MR40350).

MR40249K

\$629.95

Sorting Table and Lid

A wooden sorting table that can be used both indoors and outside. Features a removable lid which can be hung on the side of the table. Measures 120(W) x 40(D) x 60(H) cm. Made from FSC Eucalyptus hardwood. Oil as required to maintain condition. Assembly required.

MR40249

\$469.95

120cm (W)
40cm (D)
60cm (H)

Wooden Trays

A set of 6 FSC Eucalyptus hardwood sorting boxes. Two measure 35.7(W) x 23.7(D) x 2.5(H)cm, and four measure 17.8(W) x 23.7(D) x 2.5(H)cm.

MR40350

\$219.95



~~\$689.90~~
\$629⁹⁵
Save \$59.95

Outdoor Mats



Recycled Floor Mats

These outdoor mats are made from recycled plastic, so are a sustainable and environmentally friendly choice. Each mat is double sided and UV stable, so will not fade with outdoor use. To clean, simply hose off with water. We recommend to use the non-slip mats below if using on hard flooring.

MTA Spaces – Outdoor Mat Kit

Kit includes the Chevron Mat (BW10), Mandala Mat (BW11), Leaf Mat (BW12) and Teal Mat (BW13). All mats are made from recycled plastic and can be used indoors and outdoors. We recommend also using a non-slip mat on hard surfaces. BW10, BW12 and BW13 measure 180(W) x 300(D)cm. BW11 measures 180(dia)cm. Accessories not included. Contents may vary.



~~\$339.80~~
\$249.95

Save \$89.85

BW10K

Set of 4 **\$249.95**



BW10



BW11



BW12



BW13

Chevron Recycled Outdoor Mat



BW10 180 x 300cm **\$89.95**

Mandala Recycled Outdoor Mat



BW11 180(dia)cm **\$69.95**

Leaf Recycled Outdoor Mat



BW12 180 x 300cm **\$89.95**

Teal Recycled Outdoor Mat



BW13 180 x 300cm **\$89.95**

Indigenous Outdoor Mat Set

Kit contains Weaving Pattern Outdoor Recycled Square Floor Mat (BW06), Billyara – Yarning and Learning Circle Recycled Floor Mat (BW05) and Raranga Outdoor Recycled Rectangular Floor Mat (BW07). Contents may vary.

BW05K

Set of 3 **\$199.95**

Double sided



~~\$229.85~~
\$199.95

Save \$29.90

Non-slip mats!



Non-Slip Floor Mats

These non-slip floor mats are designed to go underneath the Recycled Floor Mats when used on hard flooring.

PL204 300 x 180cm **\$54.95**
PL205 180 x 180cm **\$49.95**

Milan Education – Room Dividers Kit

Excellent as partitions for classrooms and to separate play spaces. These wooden room dividers are available with natural, clear and mirrored panels. Each room divider features lockable castors for easy mobility (not illustrated) and high visibility sides. Each divider measures 126(W) x 40(D) x 75(H)cm without castors. Assembly is required. Kit includes 1 x DM1121, 1 x DM1122 and 1 x DM1123. Contents may vary.

DM1100K

Set of 3 \$949.95

MILAN
education~~\$999.85~~**\$949⁹⁵**

Save \$49.90



DM1121

Natural

DM1121

\$259.95



DM1122

Clear

DM1122

\$329.95



DM1123

Mirror

DM1123

\$409.95



Trolley &
Trays Save
\$377⁵



Natural Spaces – MakerSpace & STEAM Trolley

Kit includes 4 x Shallow Trays (SUN832S) and 1 x Deep Tray (SUN831L). Measures 100(W) x 45(D) x 130(H)cm. Contents may vary.

DM12100K

Trolley & Trays \$619.95

DM12100

Trolley \$599.95



Harmony Education – Three-Panel Mirror

Each panel measures 75.4(W)cm.

HM1029

\$699.95



Natural Spaces – Mirrored Small Room Divider

Measures 120(W) x 40(D) x 40(H)cm.

TF092



\$309.05



Stockholm Spaces – Trolley

Measures 80(W) x 50(D) x 93(H)cm without castors.

STK1109



\$289.95

Room Dividers & Trolleys



Milan Education - Whiteboard & Blackboard Room Divider

Measures 115(W) x 50(D) x 85(H)cm.

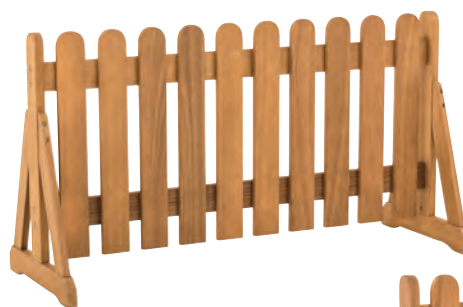
DM11907 115 x 50 x 85cm \$399.95



Outdoor Room Divider

Measures 110(W) x 40(D) x 71(H)cm.

MR40157 \$289.95



Set of 2
Save
\$14⁹⁵

Outdoor Play Fence

Kit includes 1 x MR10244 and 1 x MR10245. Contents may vary.

MR1024K	Set of 2	\$294.95
MR10244	54cm	\$134.95
MR10245	88cm	\$174.95



120cm (W)
39cm (D)
75cm (H)

Bamboo Room Divider

A bamboo room divider for easy visibility. Features lockable castors for mobility (not illustrated). Measures 120(W) x 39(D) x 75(H)cm without castors.

DM2073-2
DM2073

Set of 2 \$649.95
Each \$349.95

Set of 2
Save
\$49⁹⁵



Storage Trolley Cart

A heavy duty and durable cart made from aluminium with plastic handles. Features lockable castors, and each shelf can hold up to 80kg. Measures 80(W) x 48(D) x 100(H)cm.

HSP707 \$219.95

NEW

**Ergerite – Storage Trolley**

Single: Measures 36(W) x 42.5(D) x 92(H)cm.
 Double: Measures 69(W) x 42.5(D) x 92(H)cm.
 Triple: Measures 102(W) x 42.5(D) x 92(H)cm.
 Contents may vary.

SUN831
 SUN831K
 SUN832
 SUN832K
 SUN833
 SUN833K

Single \$159.95
 Single & Trays \$209.95
 Double \$239.95
 Double & Trays \$339.95
 Triple \$319.95
 Triple & Trays \$459.95

Triple & Trays
\$459⁹⁵
 —
 Save \$42.25



DM11016K

DM11017K
 Save
\$33²⁵



DM11017K

**Natural Spaces – Storage & Trays**

Double measures 69(W)cm, triple measures 102(W)cm and both are 45(D) x 66(H)cm. Includes castors and compatible with Grannells. Contents may vary.

DM11017K
 DM11016K

Triple Width Storage & Trays \$599.95
 Double Width Storage & Trays \$379.95

Storage Unit
 & Tubs
 Save
\$89²⁵



NEW

Ergerite – Triple Storage Unit & Tubs

Measures 70(W) x 34(D) x 87(H)cm. Contents may vary.

SUN1003K
 SUN1003
 SUN884

Storage Unit & Tubs \$299.95
 Storage Unit only \$239.95
 Storage Tub only \$9.95

**Natural Spaces – Storage Unit with Whiteboard**

Great storage with a whiteboard back panel and castors. Measures 120(W) x 45(D) x 86(H)cm. Contents may vary.

DM12101K
 Storage Unit & Trays \$629.95
 DM12101
 Storage Unit \$579.95

Storage Unit
 & Trays
 Save
\$93⁴⁰



Trolley &
 Trays Save
\$115¹⁰

NEW

**STEM Storage Trolley & Trays**

Includes 12 x 2.5 litre trays, 4 x 6 litre trays and 2 x 12 litre trays. Metal frame and features castors. Measures 46(W) x 66(D) x 120(H)cm. Contents may vary

FFP101K
 Trolley & Trays \$749.95
 FFP101
 Trolley only \$619.95

Storage Solutions

Storage Baskets

Excellent storage options which fit into our furniture ranges. Large measures 35(W) x 25.5(D) x 21(H)cm (SHT12). Small measures 35(W) x 25.5(D) x 10.5(H)cm (SHT13). Accessories not included, each sold separately.



Small

Measures 35(W) x 25.5(D) x 10.5(H)cm.

SHT13 Seagrass \$17.95
SHT13P Plastic \$17.95



Large

Measures 35(W) x 25.5(D) x 21(H)cm.

SHT12 Seagrass \$23.95
SHT12P Plastic \$23.95



Extra Large

Measures 32(W) x 37(D) x 26(H)cm.

SHT118 Seagrass \$29.95
SHT118P Plastic \$29.95



ERGERITE

Clear Storage Tub

Measures 20.5(W) x 34(D) x 12.3(H)cm.

SUN884
20.5 x 34 x 12.3cm \$9.95



Storage Bin

Accessories not included.

FFP1062 13.3 x 22 x 12.5cm - Holds up to 2.5L \$9.95
FFP1063 20 x 27.5 x 16.5cm - Holds up to 6L \$17.95
FFP1064 41 x 27.5 x 16.5cm - Holds up to 12L \$26.95



Extra Large Wicker Baskets – Oval

Extra-large woven wicker baskets with rope handles. Largest measures 68(W) x 55(D) x 52(H)cm. As made from natural wicker, the weave may not be smooth. Not suitable for outdoors.

CHH6005
Set of 3 \$179.95



Storage System Tray

SUN831L Large - 31 x 43 x 8cm \$13.95
10 or more* Each \$11.50
SUN832S Small - 31 x 43 x 8cm \$10.95
10 or more* Each \$9.50

*10 or more of any one size



Storage System Tray Lid

Suitable for use with SUN831L and SUN832S. Lid only, tray not included.

SUN834



\$6.95



Water Hyacinth Leaf Basket

Set includes 2 baskets each measuring 32(W) x 40(D) x 22.5(H)cm and 27(W) x 36(D) x 17.5(H)cm.

SHT11

Twin Set \$64.95



Woven Rush Grass Bowls

A set of 3 woven bowls for storing resources and for decoration. Largest measures 27(dia) x 17(H)cm.

CHH181052 Set of 3 \$24.95



Woven Basket with Handles

Made from natural seagrass and features cotton base and handles. Largest measures 37(W) x 31(D) x 19(H)cm.

CHH188061 Set of 3 \$71.95



Large Rectangular Wicker Baskets

These woven wicker baskets each feature a removable and machine washable, calico liner. Each basket measures 29(W) x 39(W) x 18(H)cm.

CHH8053-4 Set of 4 \$49.95



Ergerite – Standing Desk

A flexible and ergonomic addition to any school classroom. This table features side levers which allow the table to adjust in height from 73cm up to 103(H) cm. The table features a moulded edge for extra durability, an easy to clean wood-look melamine top and 2 castors for extra manoeuvrability. We recommend 2 people are needed when adjusting the height of the table.

HS158

120 x 60 – 73-103(H)cm \$399.95



Ergerite – Mobile Teacher Whiteboard

A complete teacher's storage unit featuring a whiteboard, push up paper holder, shelving, castors and space for tote trays. Measures 70(W) x 50(D) x 160(H)cm. Accessories and trays not included.

DM11903

\$599.95



Features noise
reducing acoustic
panels!



Ergerite – Acoustic Pinboard Room Divider

A mobile room divider that features noise reducing acoustic panelling and can be used as a pinboard. Measures 80(W) x 140(H)cm.

SUG101

80 x 140cm \$299.95

NEW



NEW

Ergerite – Acoustic Whiteboard & Room Divider

This multi-functional room divider can be used as a whiteboard and a pinboard and has noise reducing acoustic panelling. Measures 100(W) x 140(H)cm.

SUG102

Each \$899.95

SUG102-2

Set of 2 \$1,499.95

Set of 2
Save
\$299⁹⁵



Harmony Education - Outdoor Teepee

Harmony
education



Create wonder in outdoor play spaces with this teepee. Made from sustainable eucalyptus timber, this teepee is suited for outdoor use. Measures 170(W) x 170(D) x 160(H)cm.

MR40118

\$999.95



Natural Spaces - Large Storage Tub

NATURAL
SPACES



50cm (W)
50cm (D)
60cm (H)

A large, open storage tub suitable for storing loose parts, blocks, art and craft, STEM resources and toys. Measures 50(W) x 50(D) x 60(H)cm. Features side handles and castors.

DM11905

\$159.95

Stockholm Spaces - STEM Storage Furniture Kit

Kit includes the Maker Table & Tray (STK8626K) and the STEM Storage Play Table & Trays (STK8625K). Contents may vary.

STK862K

\$549.95

stockholm

STK8626K

95cm (W)
85cm (D)
28cm (H)

STK8625K

110cm (W)
60cm (D)
55cm (H)



\$657.55
\$549.95

Save \$107.60



STK8626K



STK8625K



Flexible freight
options available

Prices exclude taxes & duties

teaching.com.au

P +61 2 9907 5260 E export@teaching.com.au

MTEXFST20

7143